



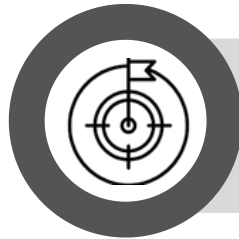
WRP Policy for Student Admission, Academic Progression & Discontinuation in the BIP-M

WRP Steering Committee 4 (WRP_SC4) · Honiara · 2 June 2026
Agenda Item 9.7 · WMO Basic Instruction Package for Meteorologists (BIP-M)





Overview



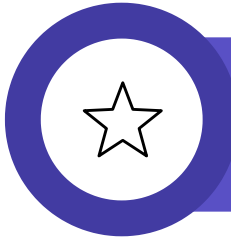
Purpose

Bring to your attention and discuss the draft policy aimed at formalising and strengthening the pipeline of Pacific NMHS staff entering and completing the WMO BIP-M programme.



BMTC Partnership

The Bureau of Meteorology Training Centre has long been the primary provider of WMO BIP-M training for Pacific NMHS staff, producing qualified meteorologists with historically high pass rates.



WRP/SPREP Role

With WRP established under SPREP, there is now a need to formalize this pipeline, ensuring it is transparent, fit-for-purpose, and aligned with national and regional capacity development priorities.



Recent Concern

Instances of course failure and non-completion in recent cohorts have highlighted systemic challenges requiring a clearer policy framework to address.



Key Challenges

1



English Language Proficiency

Limitations in English comprehension & written expression restrict ability to engage with course materials and complete assessments to the required standard.

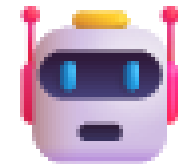
2



Pace & Intensity of Programme

Difficulties keeping pace with the intensive academic programme, especially when students fall behind and require supplementary assessments to meet WMO competency benchmarks.

3

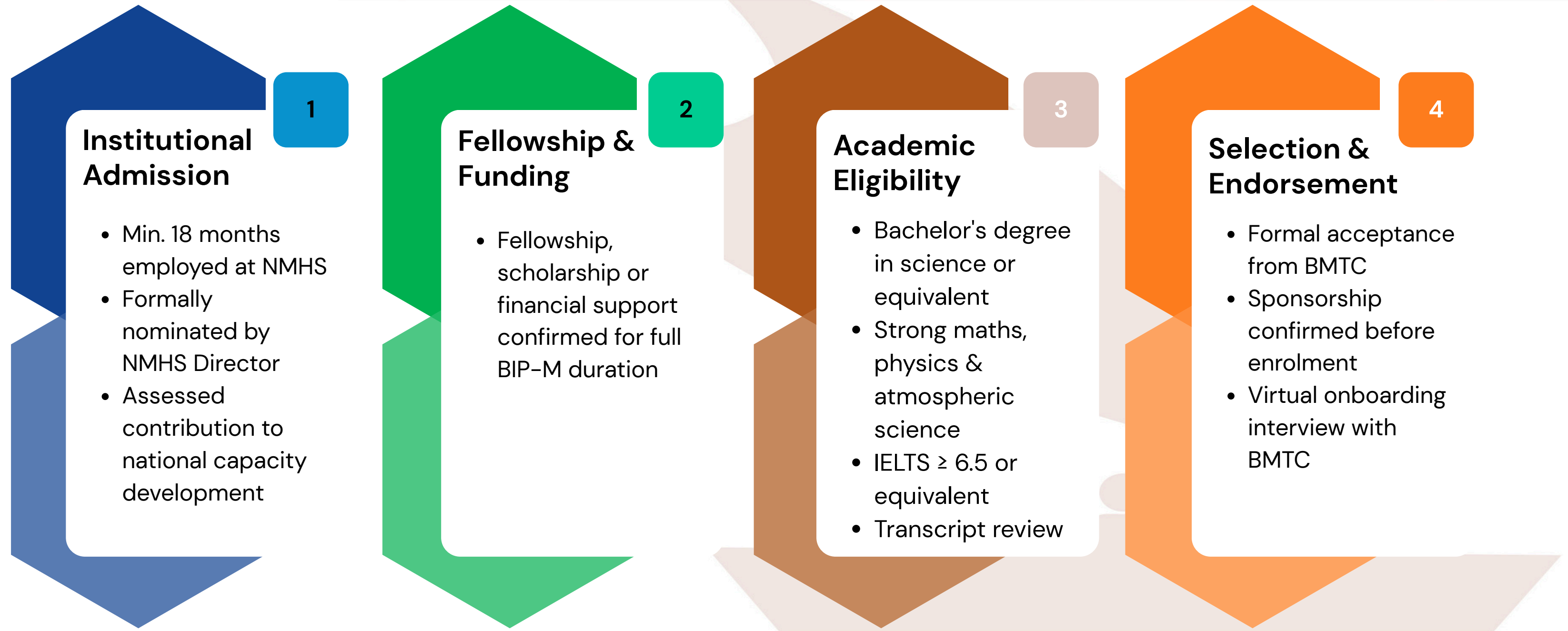


Learning Approaches & Academic Integrity

Reliance on rote memorisation over conceptual understanding, compounded by ad-hoc use of AI tools without appropriate academic integrity guidance or learning support frameworks.



Programme Selection



All 4 stages must be satisfactorily completed before a candidate is enrolled in the BIP-M programme



Academic Progression Support

Resources & Tools

Computers, internet, meteorological software and learning materials

Academic Monitoring

Individual tutoring; additional support in Maths, Physics, Computing and English

Progress Monitoring

Regular academic progress checks with early intervention where required



Wellbeing & Pastoral Care

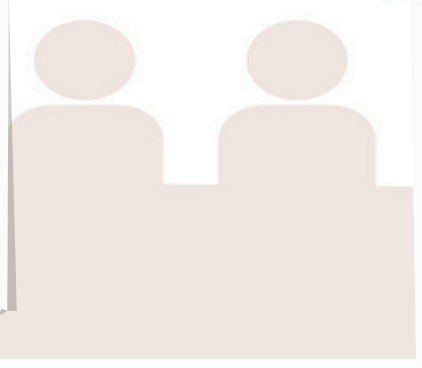
Holistic student support covering mental health and social wellbeing

Financial Support

Tuition, accommodation and living expenses during the preparatory phase

NMHS Support

Workplace and professional support from their NMS/NMHSs.



BMTC Moodle

COMET modules delivered with BMTC, extra tutorials, supervision, etc





Discontinuation - Grounds & Process

#	Ground for Discontinuation	Discontinuation Process
1	Academic Performance: Failure to meet minimum academic standards despite support and supplementary assessment	Provide documented evidence of academic challenges and support interventions attempted
2	Course Non-Completion: Repeated failure to complete units or achieve required WMO competencies within programme timeframe	Consult with home NMHS Director regarding performance concerns and capacity development implications
3	Academic Integrity Breaches: Serious or repeated breaches including inappropriate use of AI tools	Student offered opportunity to respond and present mitigating circumstances
4	Withdrawal of Institutional Support: Loss of nomination or employment with home NMHS	Explore alternatives: deferred continuation or transfer to 12-month preparatory pathway
5	Funding Cessation: Withdrawal or termination of financial support required to continue studies	





Discontinuation - Implication & Appeal

#	Implication of Discontinuation	Appeals & Exceptional Circumstance
1	Immediate termination of all scholarship benefits, tuition, stipend, travel and accommodation	Medical or Compassionate Grounds: Documented medical or personal circumstances may be considered as grounds for appeal before any formal discontinuation decision
2	Return to home country or employing agency required	Temporary Suspension or Deferred Study: Offered as an alternative where circumstances allow, avoiding outright discontinuation where possible
3	Possible repayment of scholarship funds in cases of misconduct or breach of contract	Appeals ensure procedural fairness for the student and protect programme integrity
4	Ineligibility for future WRP funding opportunities	





Weather Ready Pacific



End

Discussion!

