

Pacific Islands - Ocean and Climate Outlook Forum (OCOF) No. 172

Country: Samoa

Part 1: Recent climate

TABLE 1: Monthly Rainfall

Station (include data period)	Oct-2021	Nov-2021	Dec-2021				
			Total (mm)	33%tile	67%tile	Median	Rank
	Total (mm)	Total (mm)	Rainfall (mm)				
Apia (1890-2021)	110.4	144.4	395.8	315.0	464.0	373.8	77/131
Afiamalu (1903-2021)	227.6	469.3	522.7	480.5	705.3	556.8	32/69
Nafanua (1965-2021)	114.2	237.9	477.6	352.0	509.9	422.5	29/47
Faleolo (1956-2021)	91.2	180.6	286.6	221.6	318.8	270.2	34/60

TABLE 2: Three-month Total Rainfall for October to December 2021

Station	Three-month Total		33%tile	67%tile	Median	Rank
	Rainfall (mm)					
Apia (1890-2021)	650.6	Below normal	740.1	914.8	819.8	32/131
Afiamalu (1903-2021)	1219.6	Normal	1215.2	1519.2	1342.4	27/68
Nafanua (1965-2021)	829.7	Normal	825.3	1060.5	959.6	16/46
Faleolo (1956-2021)	558.4	Normal	553.2	717.5	639.4	21/59

Part 1i. Monthly and Seasonal Outlooks for February and February to April 2022

NB: The X LEPS % score has been categorised as follows:

Very Low: $X < 0.0$

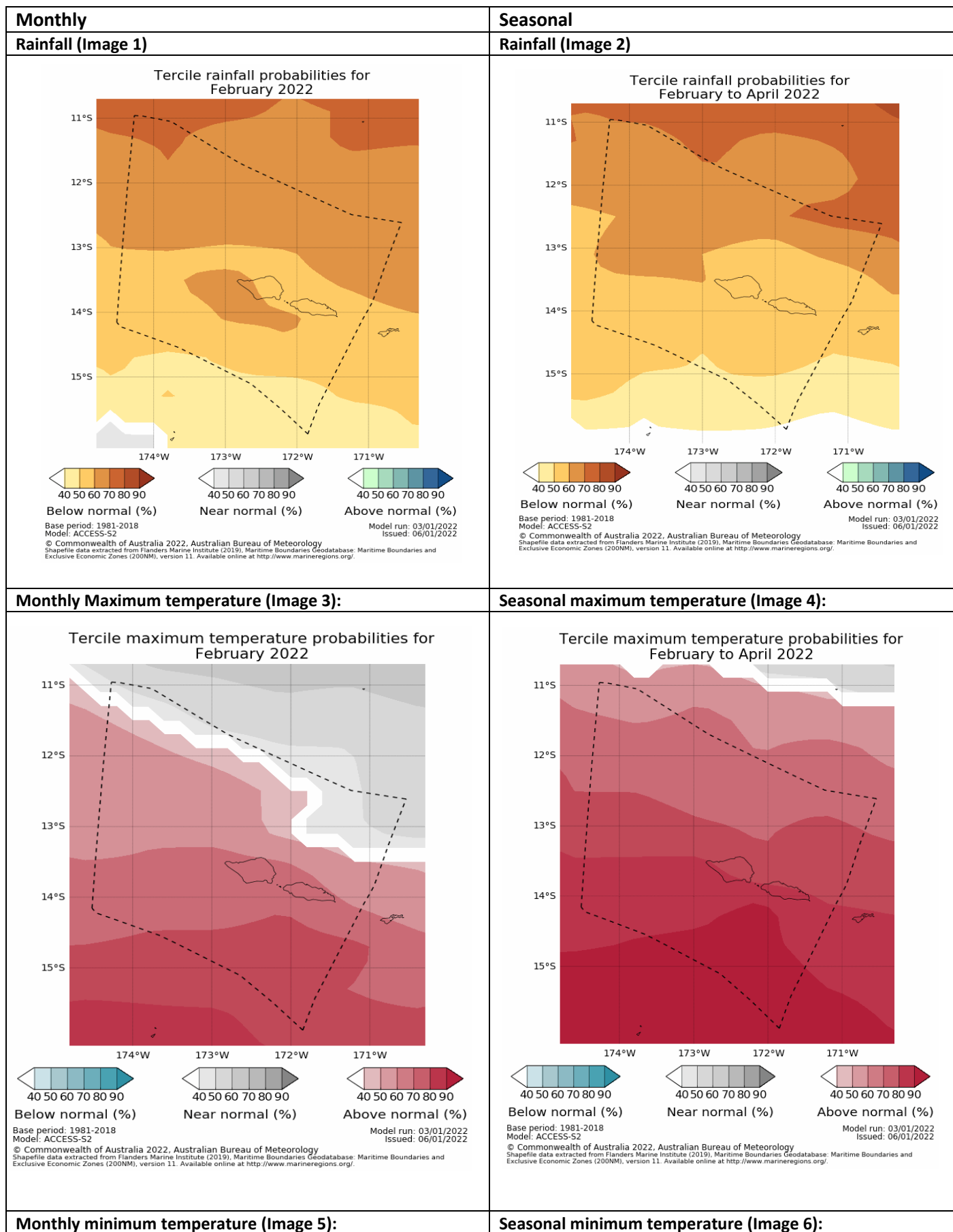
Low: $0 \leq X < 5$

Moderate $5 \leq X < 10$

Good: $10 \leq X < 15$

High: $15 \leq X < 25$

Very High: $25 \leq X < 35$ Exceptional: $X \geq 35$



NB: The X LEPS % score has been categorised as follows:

Very Low: $X < 0.0$

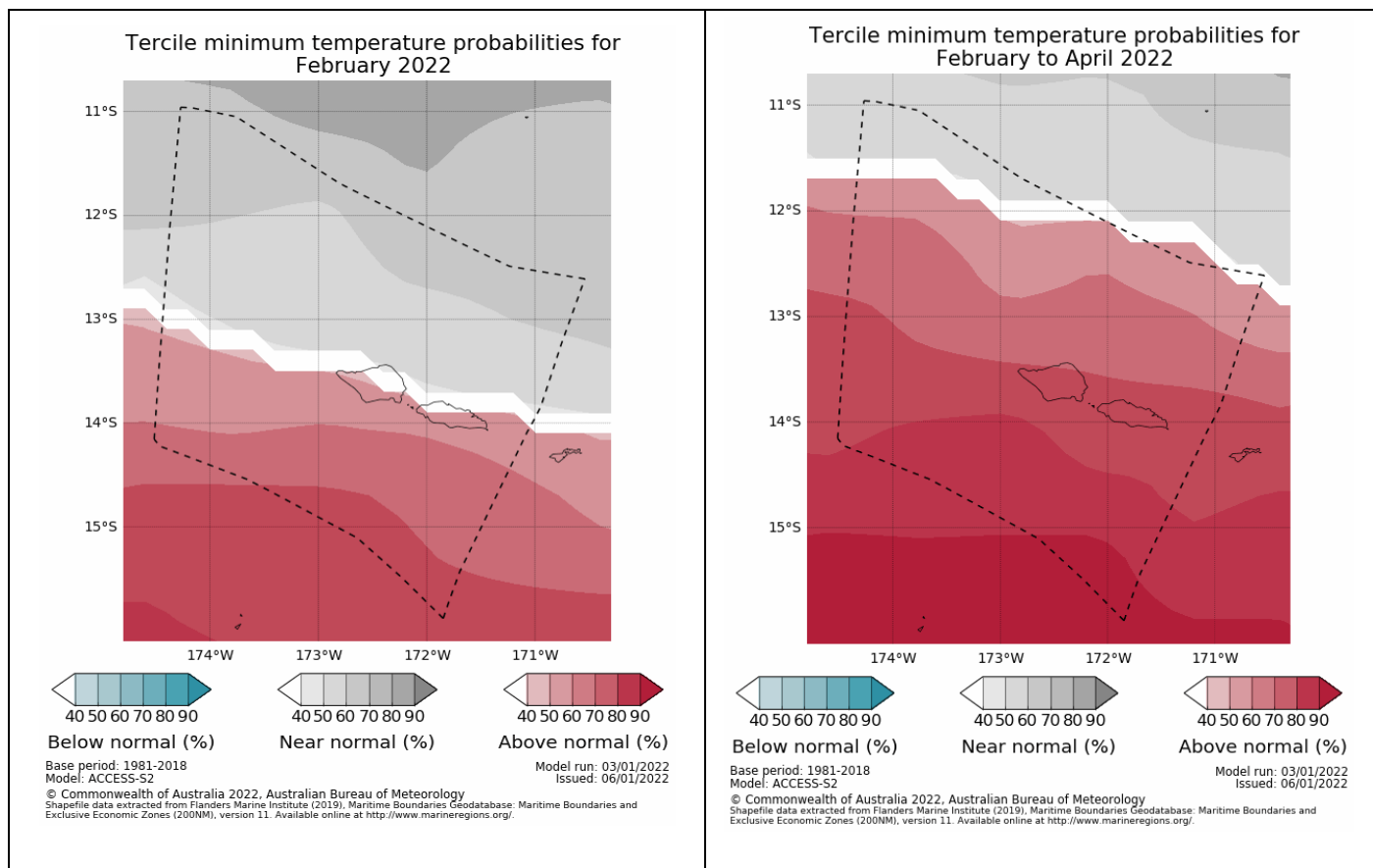
Low: $0 \leq X < 5$

Moderate $5 \leq X < 10$

Good: $10 \leq X < 15$

High: $15 \leq X < 25$

Very High: $25 \leq X < 35$ Exceptional: $X \geq 35$



Part 2: Recent Ocean summary statement

Monthly: December 2021

Monthly: December	Last three months: October to December 2021:
Sea Surface Temperature (Image 1): <p>©Commonwealth of Australia 2021 Australian Bureau of Meteorology, COSPac: COMF Reynolds SST</p>	Sea Surface Temperature (Image 4): <p>©Commonwealth of Australia 2021 Australian Bureau of Meteorology, COSPac: COMF Reynolds SST</p>
Sea level (Image 2):	

NB: The X LEPS % score has been categorised as follows:

Very Low: $X < 0.0$

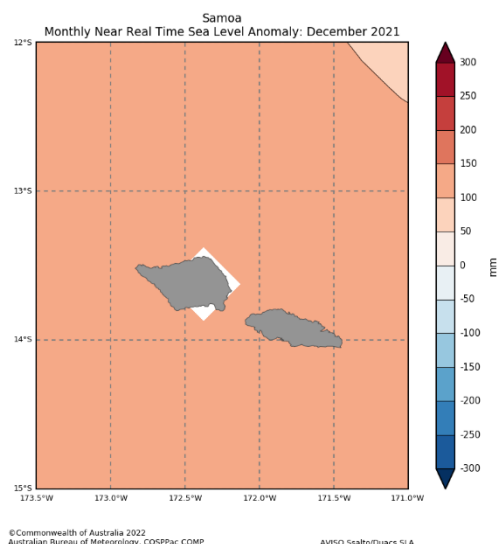
Low: $0 \leq X < 5$

Moderate $5 \leq X < 10$

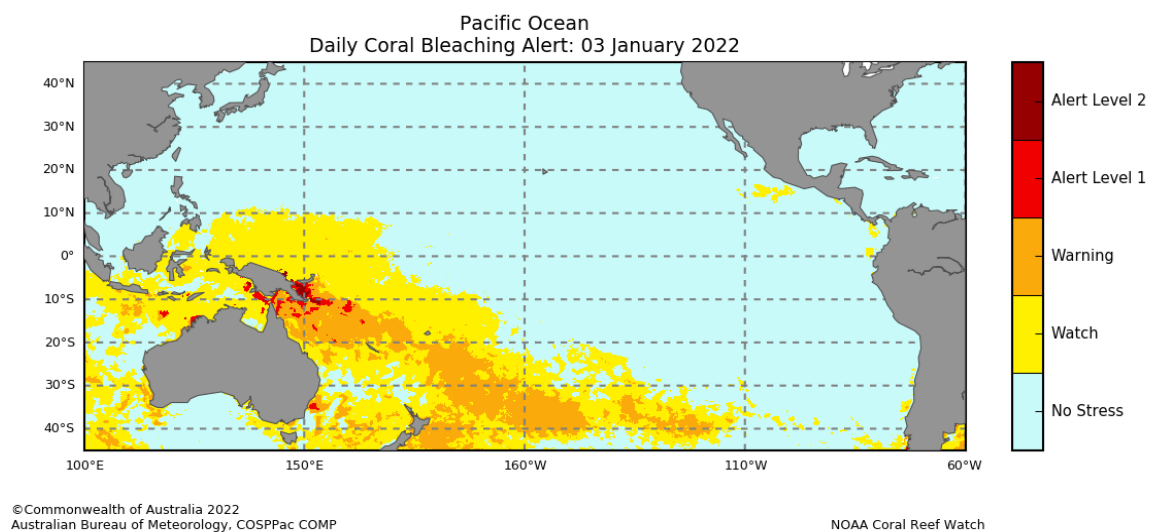
Good: $10 \leq X < 15$

High: $15 \leq X < 25$

Very High: $25 \leq X < 35$ Exceptional: $X \geq 35$



Daily coral bleaching alert (Image 3):



NB: The X LEPS % score has been categorised as follows:

Very Low: $X < 0.0$ Low: $0 \leq X < 5$ Moderate: $5 \leq X < 10$ Good: $10 \leq X < 15$ High: $15 \leq X < 25$

Very High: $25 \leq X < 35$ Exceptional: $X \geq 35$

Part 2i. Monthly and Seasonal Outlooks for February and February to April 2022

Monthly: February	Seasonal: February to April
Monthly sea surface temperature (Image 5):	Seasonal sea surface temperature (Image 6):
<p>Difference from average sea surface temperature forecast for February 2022</p> <p>Base period: 1981-2018 Model: ACCESS-S2 © Commonwealth of Australia 2022, Australian Bureau of Meteorology Shapefile data extracted from Flanders Marine Institute (2019), Maritime Boundaries Geodatabase: Maritime Boundaries and Exclusive Economic Zones (200NM), version 11. Available online at http://www.marinerregions.org/</p> <p>Model run: 03/01/2022 Issued: 05/01/2022</p>	<p>Difference from average sea surface temperature forecast for February to April 2022</p> <p>Base period: 1981-2018 Model: ACCESS-S2 © Commonwealth of Australia 2022, Australian Bureau of Meteorology Shapefile data extracted from Flanders Marine Institute (2019), Maritime Boundaries Geodatabase: Maritime Boundaries and Exclusive Economic Zones (200NM), version 11. Available online at http://www.marinerregions.org/</p> <p>Model run: 03/01/2022 Issued: 05/01/2022</p>
Monthly sea level (Image 7):	Seasonal sea level (Image 8):

NB: The X LEPS % score has been categorised as follows:

Very Low: $X < 0.0$

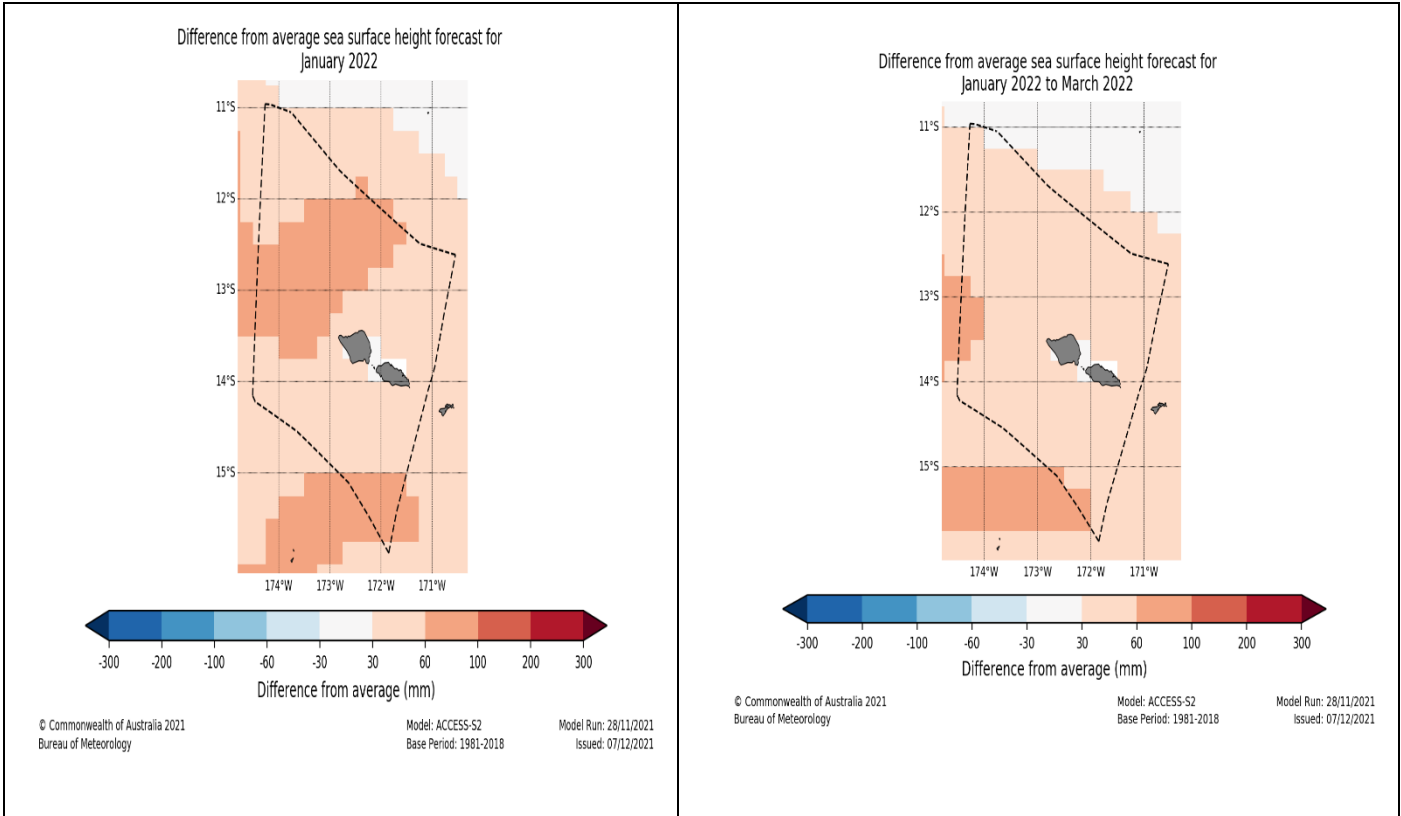
Low: $0 \leq X < 5$

Moderate $5 \leq X < 10$

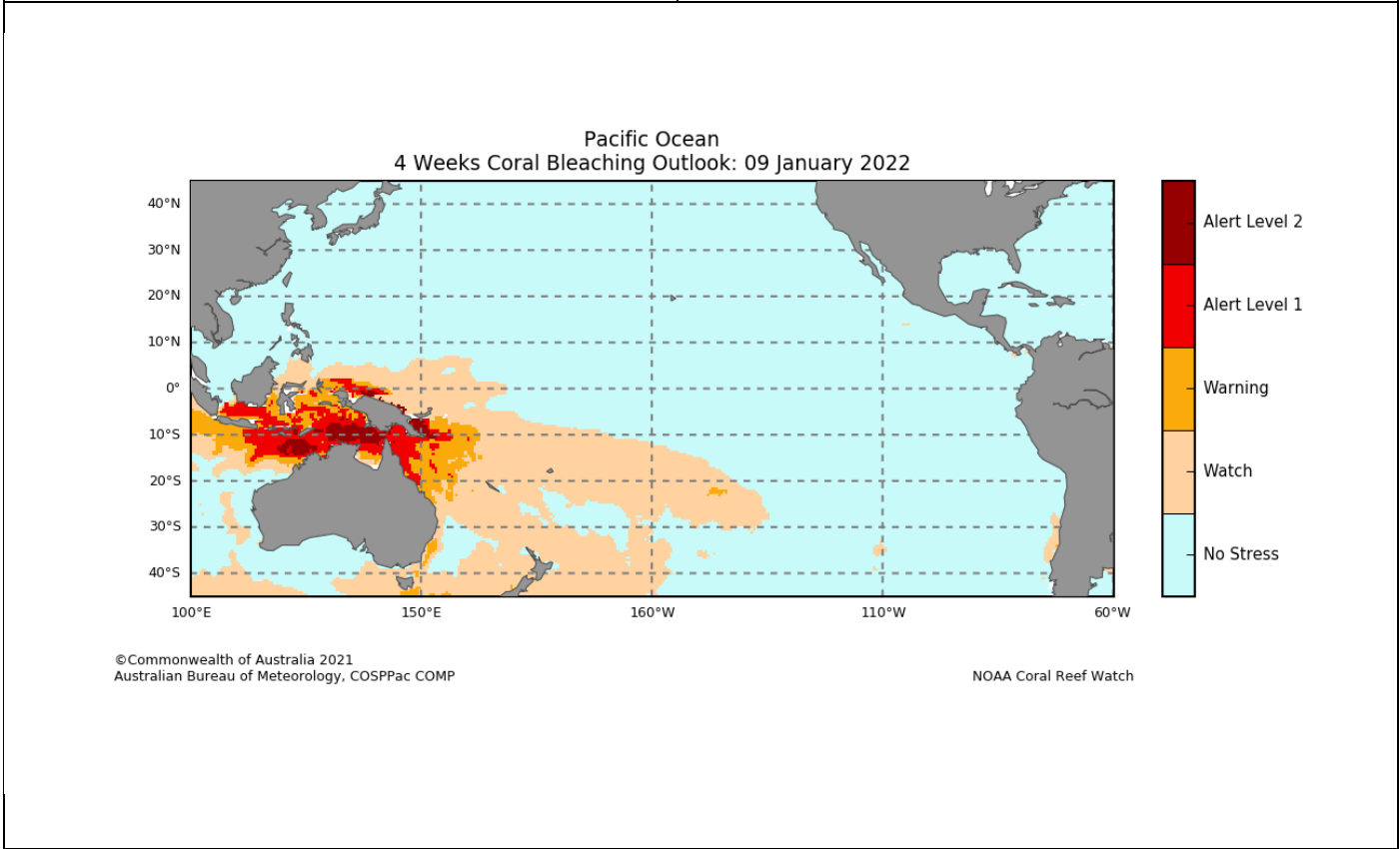
Good: $10 \leq X < 15$

High: $15 \leq X < 25$

Very High: $25 \leq X < 35$ Exceptional: $X \geq 35$



4-week Coral Bleaching (Image 9):



Summary Statement

NB: The X LEPS % score has been categorised as follows:

Very Low: $X < 0.0$ Low: $0 \leq X < 5$ Moderate $5 \leq X < 10$ Good: $10 \leq X < 15$ High: $15 \leq X < 25$

Very High: $25 \leq X < 35$ Exceptional: $X \geq 35$

Monthly and last three months: December 2021/October to December statement (Highly significant changes)

Normal rainfall was registered at all stations throughout Samoa.

Normal rainfall was recorded at all stations in the past three months across Samoa except for Apia station with below normal rainfall.

Part 1i. Monthly and Seasonal Outlooks for February and February to April 2022

Monthly /Seasonal rainfall and temperature Outlook statements (Highly significant changes)

Below normal rainfall is likely for Samoa for the month of February and for February to April.

The outlook shows above normal maximum temperatures are very likely to occur across Samoa for February 2022 and for February to April 2022.

The outlook shows above normal minimum temperatures are likely for the southern parts of Upolu and Savaii and offers little guidance to the northern parts of Upolu and Savaii. Above normal minimum temperatures are very likely to occur across Samoa from February to April 2022.

Part 2: Recent Ocean summary statement

Monthly and last three months: December/October to December 2021 (Highly significant changes)

Sea Surface temperatures (SSTs) in the Samoa region experienced a slight warming in the last three months.

Sea Level Anomaly (SLA) showed a slight increase of 100mm-150mm in December 2021.

Part 2i. Monthly and Seasonal Outlooks for February and February to April 2022

Ocean Variable statement (Highly significant changes)

Sea Surface temperatures (SST) for Samoa is anticipated to be normal for the rest of the island in February 2022. It is forecasted that Samoa is expected to continue with near normal SST conditions in the upcoming three-month period February to April 2022.

NB: The X LEPS % score has been categorised as follows:

Very Low: $X < 0.0$

Low: $0 \leq X < 5$

Moderate $5 \leq X < 10$

Good: $10 \leq X < 15$

High: $15 \leq X < 25$

Very High: $25 \leq X < 35$ Exceptional: $X \geq 35$

TABLE 3: Stakeholder Engagement- Evaluations of how effective NMS engage with stakeholders

Product	Date: December 2021	Stakeholder	Total Number of Participants	Number of male	Number of female
Climate Bulletin					
EAR Watch					
Monthly Climate Briefing					
Ocean Outlook					
Climate data request					
Total					

NB: The X LEPS % score has been categorised as follows:

Very Low: $X < 0.0$

Low: $0 \leq X < 5$

Moderate $5 \leq X < 10$

Good: $10 \leq X < 15$

High: $15 \leq X < 25$

Very High: $25 \leq X < 35$ Exceptional: $X \geq 35$