

# La Niña and Tropical cyclone Impacts

Philip Malsale –SPREP  
National Met Services

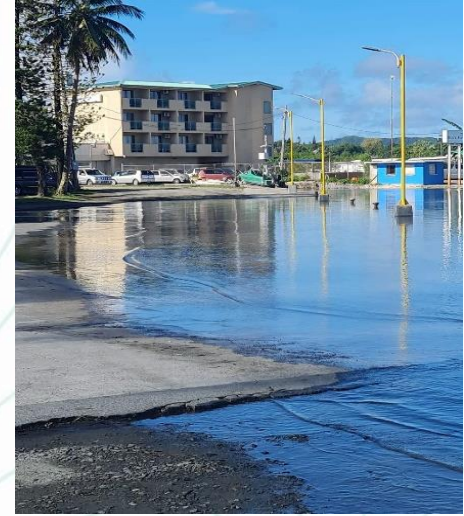
# Outline of Presentation

The presentation shows images from around the region on the impacts of La Niña and tropical cyclones 2020/2021

Connecting Science to Impacts

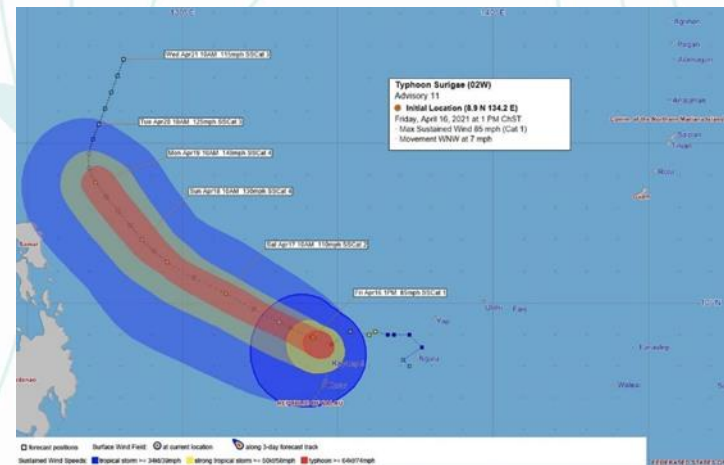
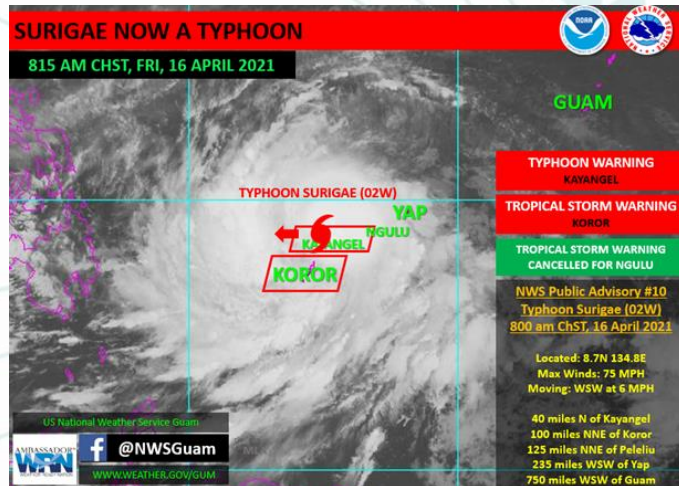
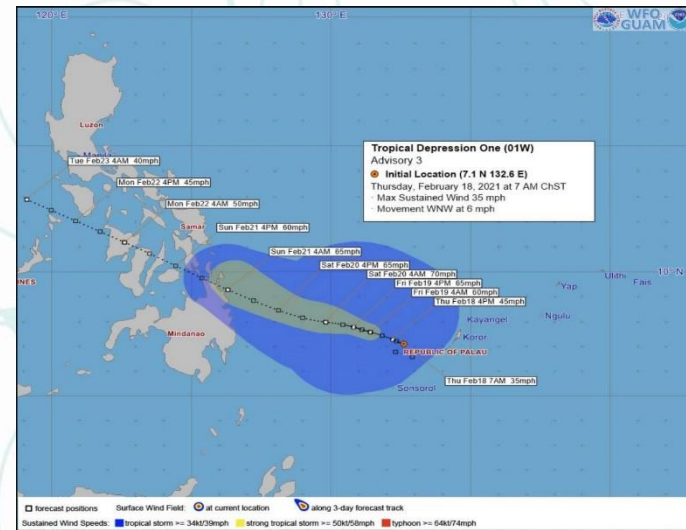
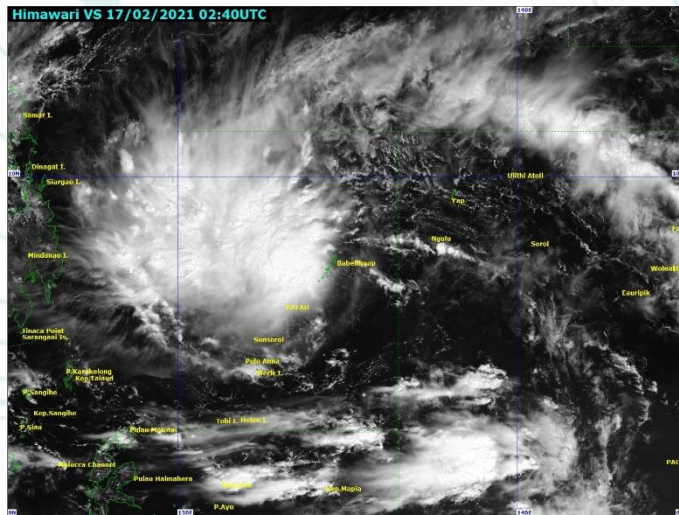


# Palau – Extreme high tides





# Palau-Tropical cyclones





# PNG - Flooding



Members of the Pish Pond community at ward eight clearing debris caused by a landslide which killed a child and destroyed several properties, including homes, on Friday.

## Landslide, flooding claim life, properties, food gardens



### Locals displaced, homes destroyed

**M**ore than 50 people have been displaced after floods destroyed their homes and gardens at Tiri Village, Ialibu-Pangia District in Southern Highlands Province.

## Take precaution when crossing flooded rivers, travellers told

March 10, 2021 The National National

PEOPLE travelling to and from Madang have been advised to take precautions while travelling along the highway because of heavy rain that has caused some rivers to flood, police say.

Madang police commander Supt Mazuc Rubiang said the Yuria River was flooded for almost three days after continuous rain, posing a threat to roads, bridges and travellers.

He said Ramu and Walium police officers had been patrolling the area to make sure that vehicles and passengers were safe on both sides of the river.

Supt Rubiang said police presence at the said location was to prevent opportunist crime from happening, especially to vehicles and passengers.

He advised against small vehicles attempting to cross rivers during this period.



Trucks along the Madang Highway tried wet crossing the flooded river yesterday morning. – Picture supplied



### Flood destroys food gardens at Kido

**F**ood gardens at Kido Village in the Central Province are under water because of the heavy rains that have led to a rise in sea levels.



# PNG -Drought



Villagers on Tuam Island, ward 13 in Siassi, Morobe, digging for water on the island.  
- Picture courtesy of ROBERT MICHAEL

## Islands facing drought



# PNG- strong wind



The breadfruit tree which fell on the Geita's family home at Korobosea in Port Moresby, resulting in the death of 18-year-old Komik who was trapped inside with her 12-year-old brother early yesterday morning.  
- Nationalpic by KENNEDY BANI

## **Strong winds, heavy rain cause havoc in Pom**

2 killed in storm



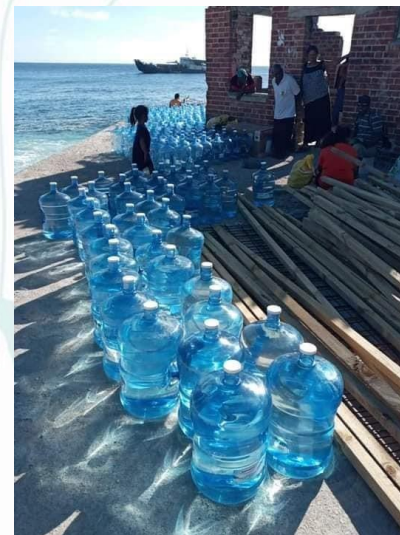
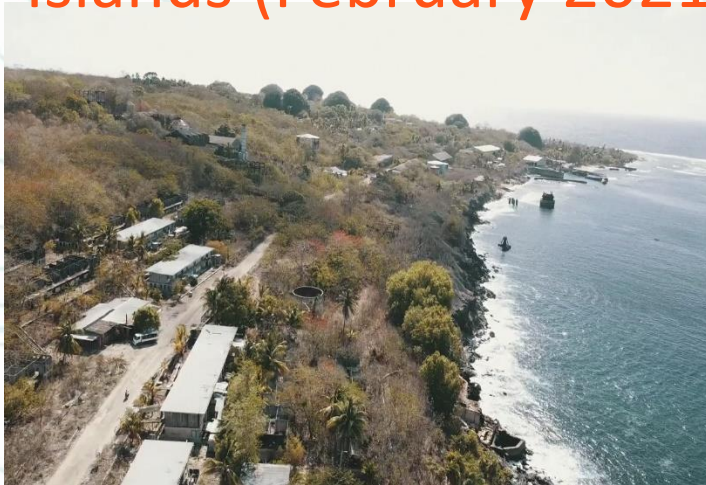
# Solomon Islands – Tropical cyclone





# Kiribati – La Niña

- Drought – Banaba Islands (February 2021)





# Kiribati –Tropical cyclone



Images of Onotoa Islands



Images of North Tabiteuea  
Maneaba



# Vanuatu – Shefa province

## Landslide and flooding









# Vanuatu-Torba province

## Flooding









# Vanuatu –Sanma province





# Vanuatu-Penama province

## Landslide and flooding





# Vanuatu –Malampa Province

## Landslide and Flooding





# Fiji — La Niña Flooding









# Fiji – Tropical cyclones (Yasa, Ana and Bina)





# Samoa – La Niña Flooding





The background features a complex pattern of thin, teal-colored wavy lines that resemble topographical contour lines or fluid flow paths. These lines are interspersed with small, solid teal circles and triangles, some of which are positioned along the lines, suggesting a vector field or a sequence of points. The overall aesthetic is clean and modern, with a light teal color palette.

Thank you