



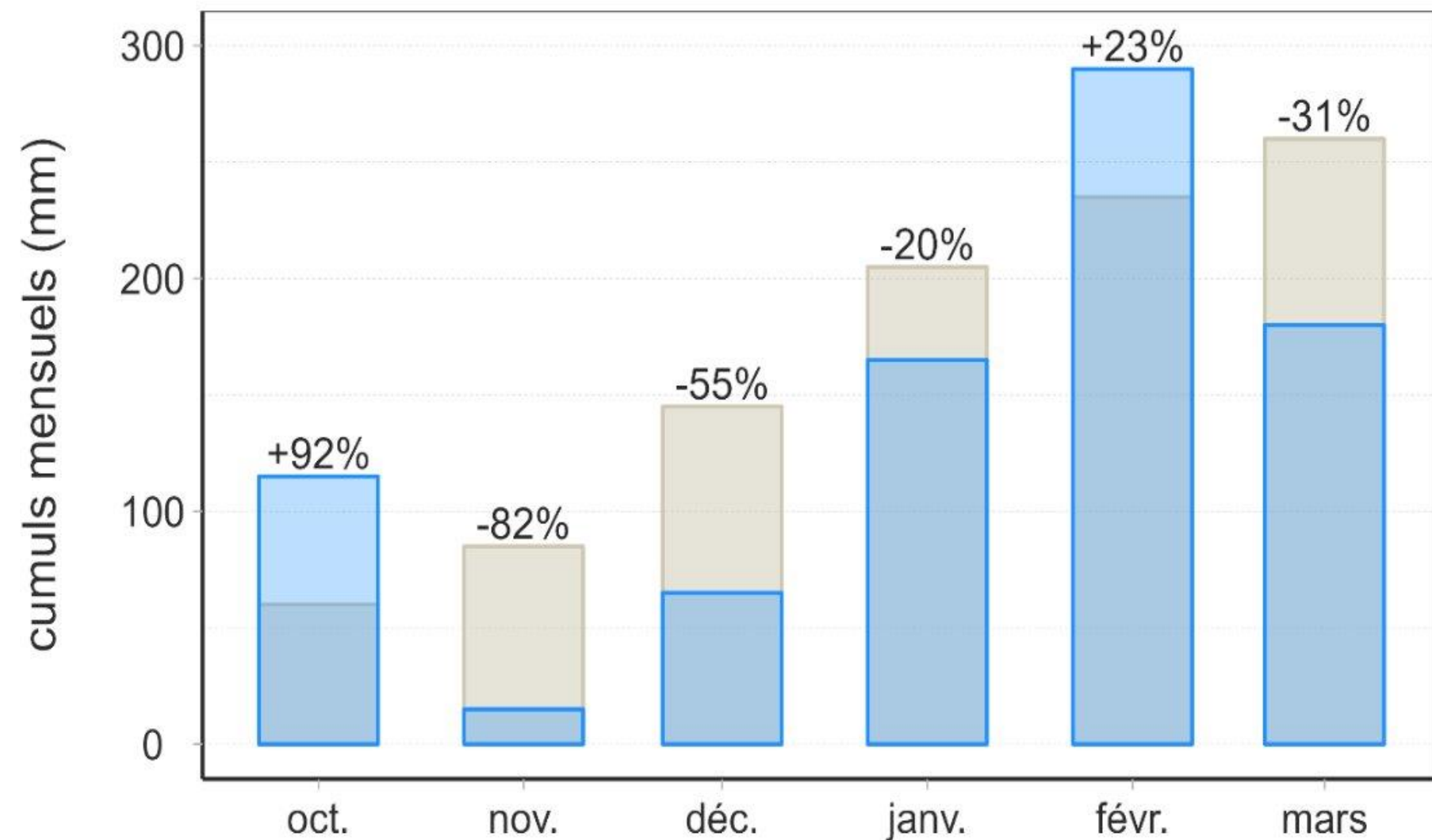
Impacts:

Overview of Significant weather and ocean events over the last 6 months in the Melanesian countries

Arieta D Baleisolomone
on behalf of the Melanesian countries
Senior Scientific Officer
Fiji Meteorological Service



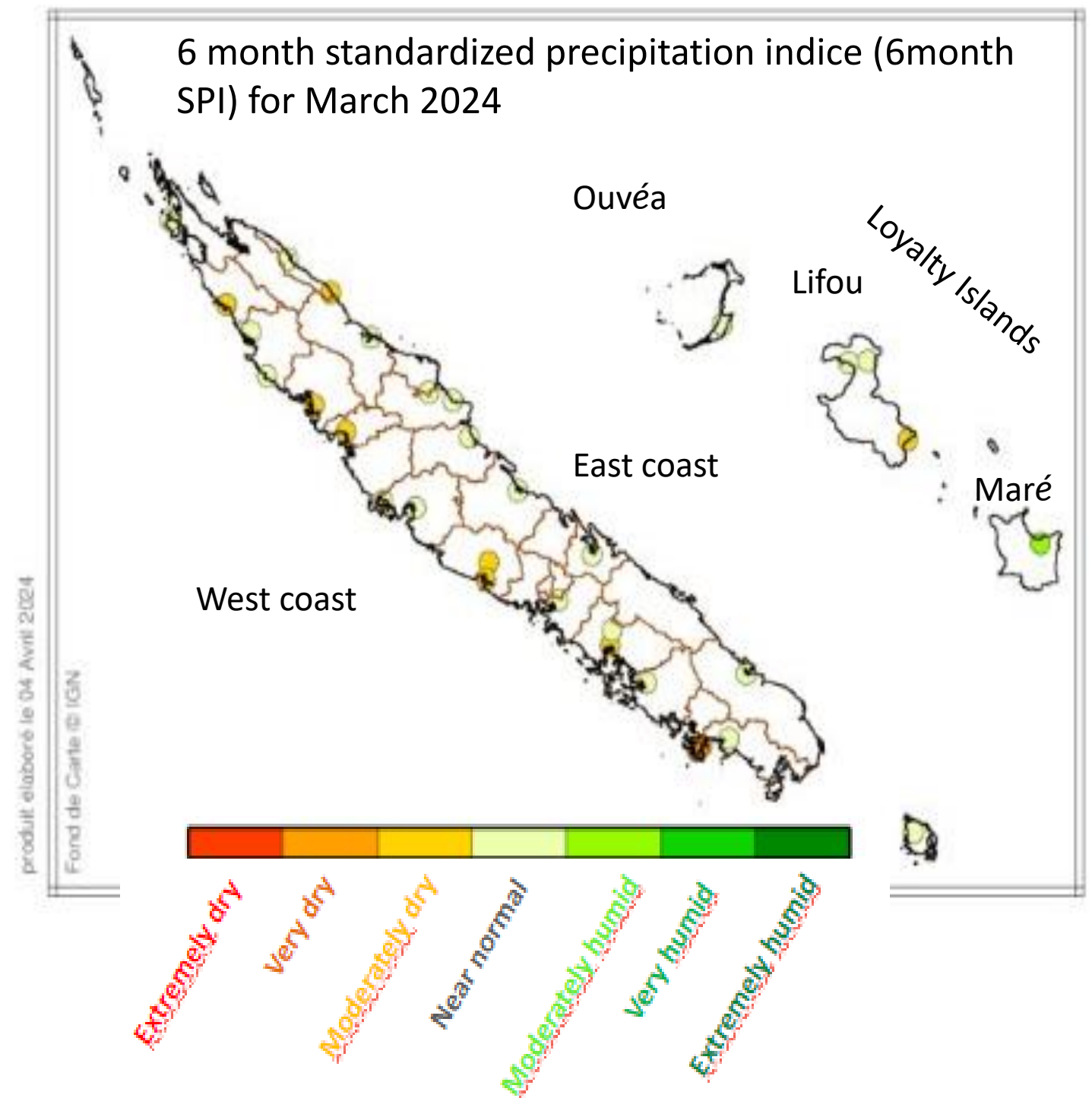
Monthly precipitation over the last 6 months



Over the last 6 months, average cumulative rainfall was 720 mm, which is close to normal (8% deficit).

However, monthly rainfall to normal ratios are very heterogeneous, particularly during the first 3 months : while it rained 2 times more than normal in October, it was very dry in November and December.

Source: *Météo-France New-Caledonia*



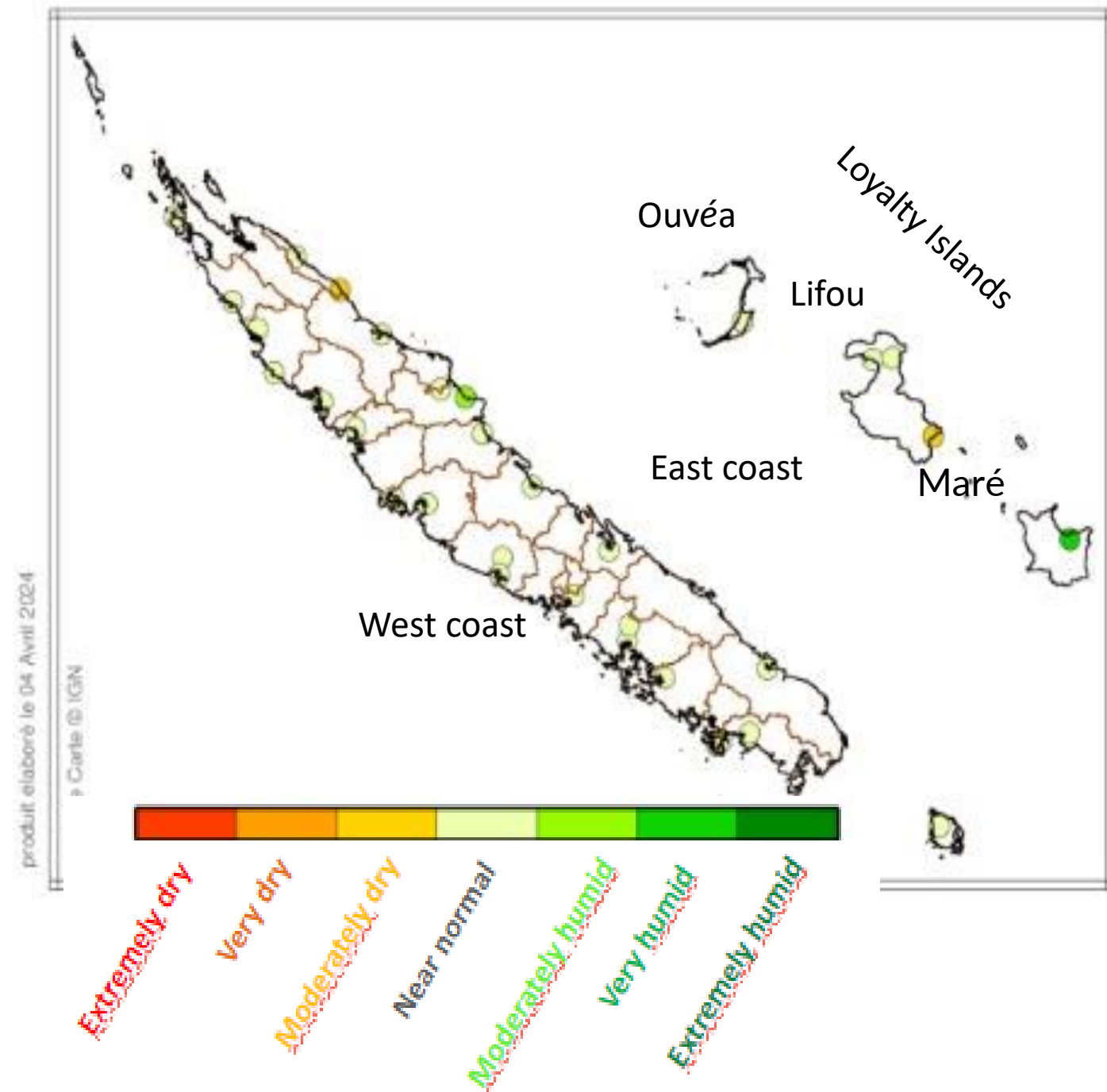
According to 6m SPI:

West Coast- near normal to moderately dry conditions

East coast- mostly near normal conditions

Loyalty Islands- near normal in Ouvéa and Lifou and moderately humid in Mare.

Monthly precipitation over the last 3 months

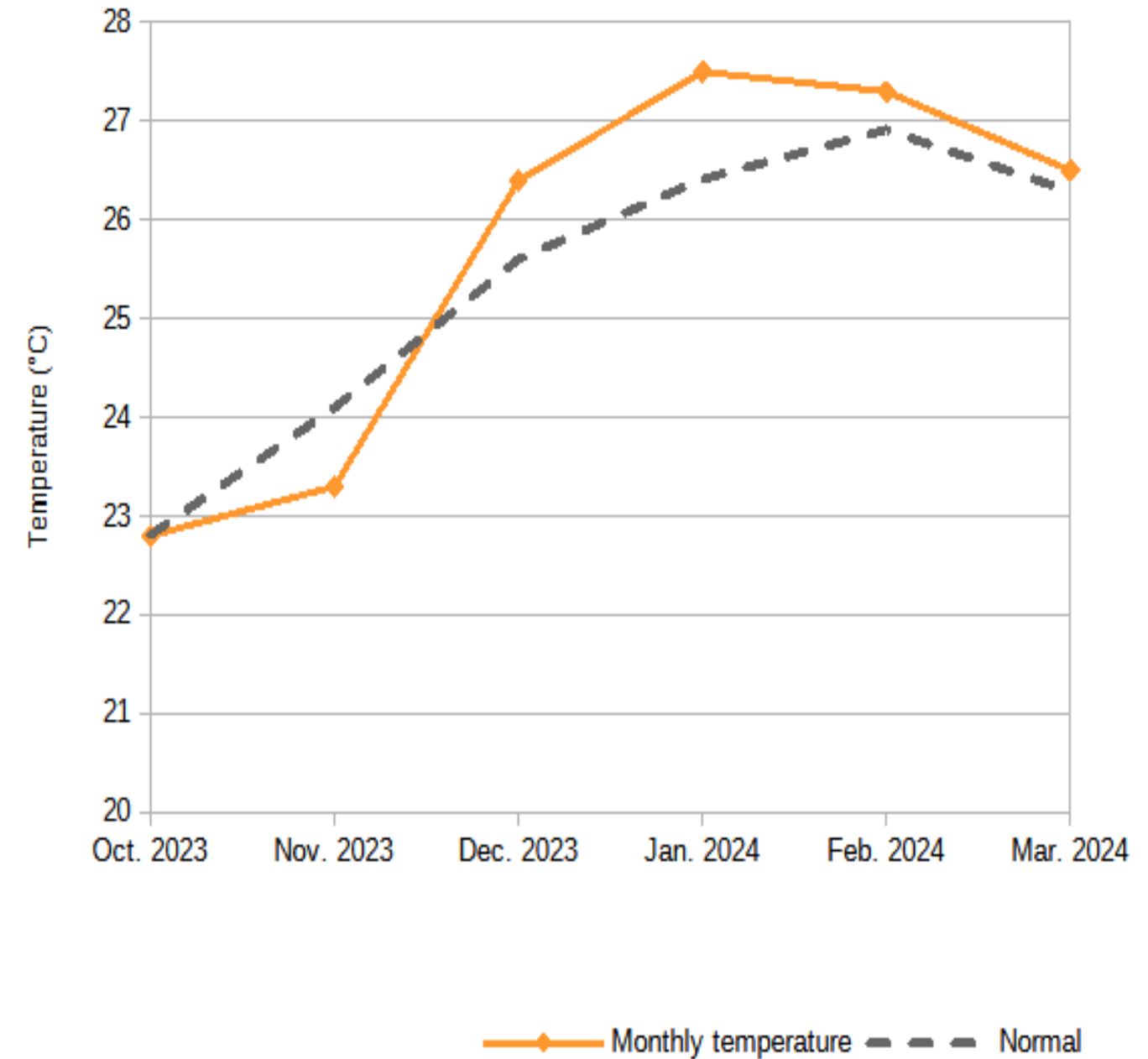


According to 3-month SPI :
Conditions are near normal over most of the country.

In Maré, conditions are very humid, due to a month of February 2.5 times more rainy than usual.

Source: *Météo-France New-Caledonia*

Temperature over the last 6 months



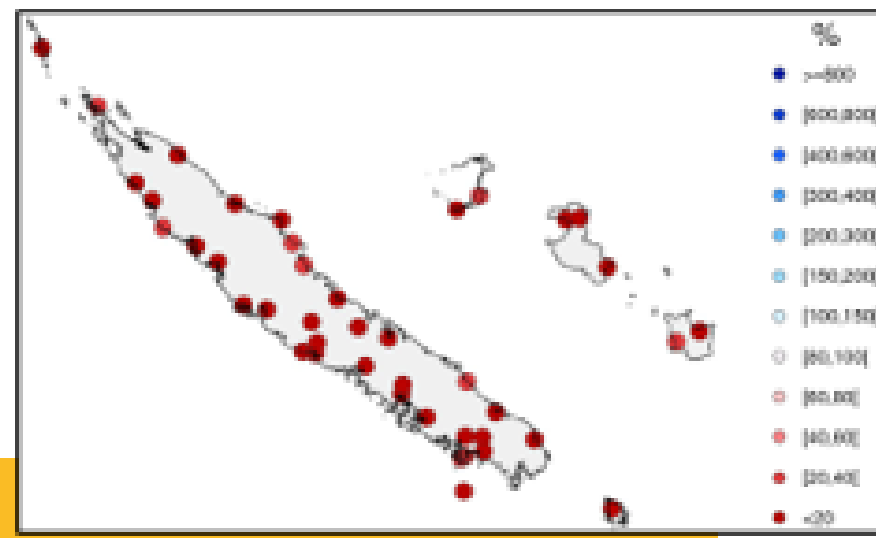
Monthly temperature between October 2023 and March 2024.

Temperature anomaly over the last 6 months : +0,7°C.

Notable events

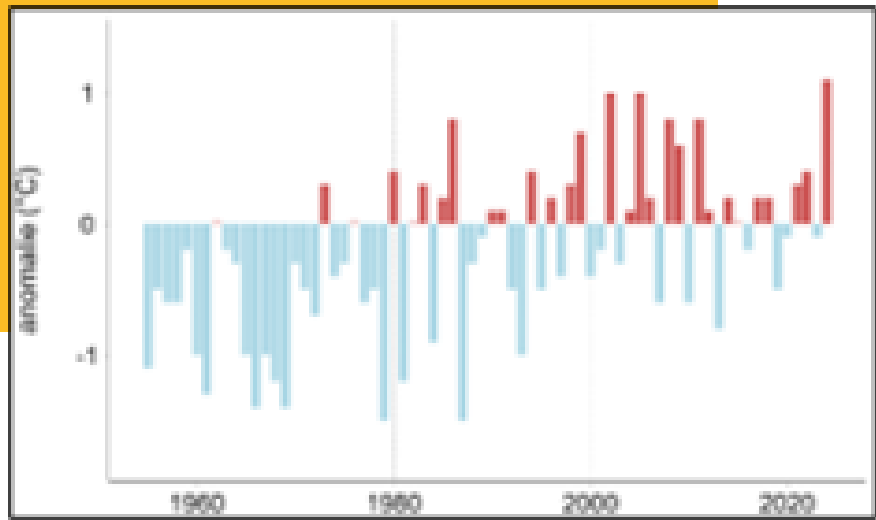
November 2023 : the 1st driest November

With an average rainfall of **10 mm** (88% deficit) over the country, November 2023 ranks as the **1st driest November** since 1955 in New Caledonia, on a par with November 2019 and 2002.



January 2024 : the 1st hottest January

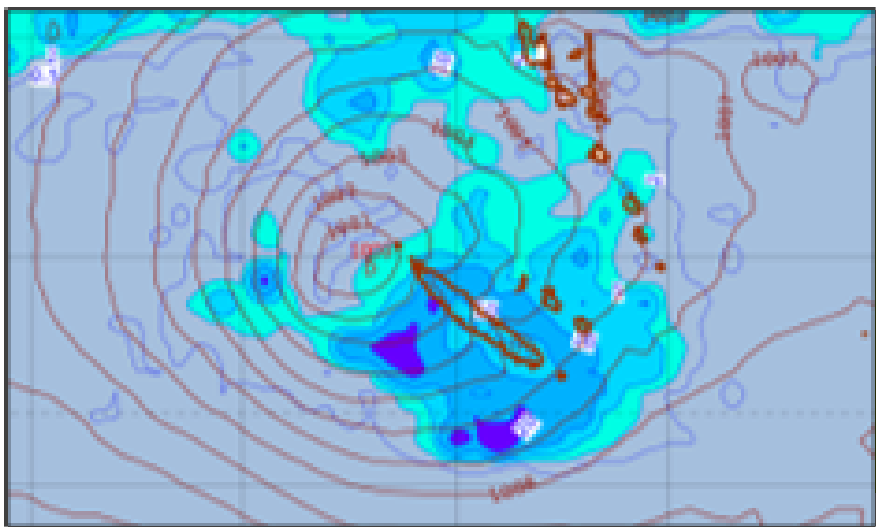
With an average temperature of **27,5°C** (+1.1°C) across the country, January 2024 ranks as the **1st hottest January** since 1955 in New Caledonia.



February 2024 : 10 days under the influence of a weak tropical depression TD05f

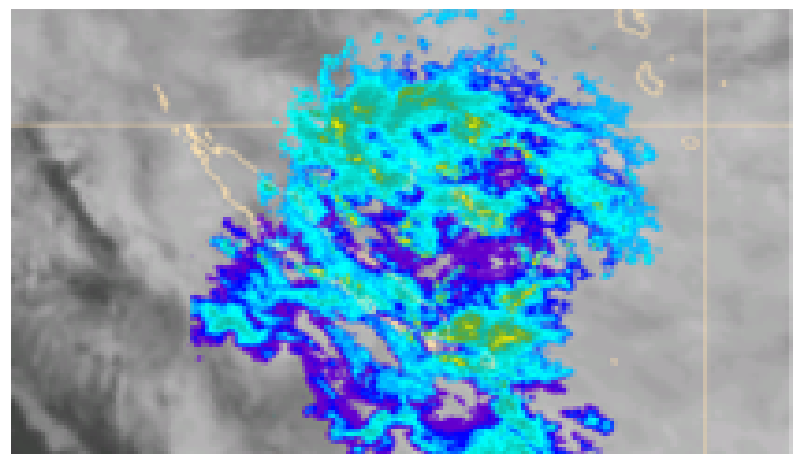
In Maré :

- 452 mm in total, equivalent to 2,5 months of rainfall.
- **281,6 mm in 3 hours** : equivalent to 1.5 month's rainfall. Such an intensity of rainfall in 3 hours had never been reached, either at Maré or at any other station in New Caledonia.



Half of March under rainfall

- Continuous rainfall during **19 days**.
- **More than 700 mm** in 19 days in the far south of the main island.

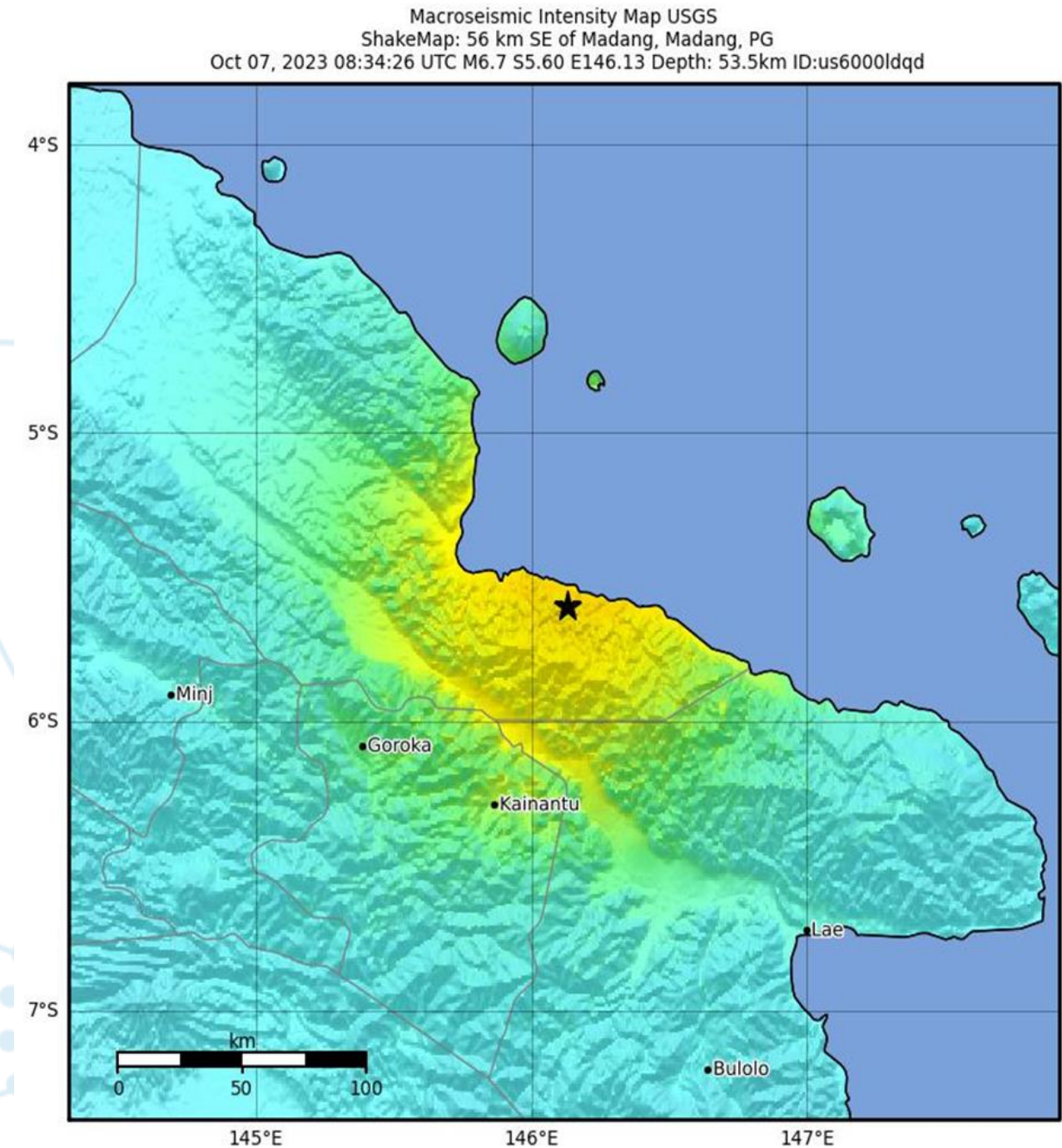


PNG: Madang Earthquake

Source: PNG Met

- Areas affected:
- 28 villages in 9 wards within 10km radius from epicenter
- 3,218 population (m = 1613; f =1605) potentially at high risk within 10 km radius from epicenter
- 126 villages in 30 wards within 30 km radius from epicenter
- 22,617 population (m = 11,499; f =11,118) within 30 km radius from epicenter

Over 48 hours following the 6.7M earthquake in the Rai Coast District of Madang province, and subsequent aftershocks on Saturday 7 October 2023, information is beginning to emerge on its impacts. According to the provincial disaster coordinator's office and IOM there are no casualties reported thus far, however, there are a total of seven persons who have sustained injuries. Of the seven, three have sustained severe injuries which include one male adult, one female adult and one female child. A further four individuals sustained minor injuries.



SHAKING	Not felt	Weak	Light	Moderate	Strong	Very strong	Severe	Violent	Extreme
DAMAGE	None	None	None	Very light	Light	Moderate	Moderate/heavy	Heavy	Very heavy
PGA(%g)	<0.0464	0.297	2.76	6.2	11.5	21.5	40.1	74.7	>139
PGV(cm/s)	<0.0215	0.135	1.41	4.65	9.64	20	41.4	85.8	>178
INTENSITY	I	II-III	IV	V	VI	VII	VIII	IX	X+

Scale based on Worden et al. (2012) Version 2: Processed 2023-10-07T10:35:56Z
 △ Seismic Instrument ○ Reported Intensity ★ Epicenter

FLOODING EVENTS

Source: PNG Met



Flooding at Marasin Bridge, EHP.



in Madang.

SENA43



Helpless onlookers watch as Marasin Bridge swept away by floods

Brief description of graphic



SENA43



SENA43

Waghi River Floods



Waghi river bursts causing extensive flooding to nearby villages and roads

Source: Kasis Inape courtesy of FB

FLOODING EVENTS

Source: Fiji Met



Flash flooding in Vatuwaqa, Central Division on 20th January, 2024. Source: National Disaster Management Office.



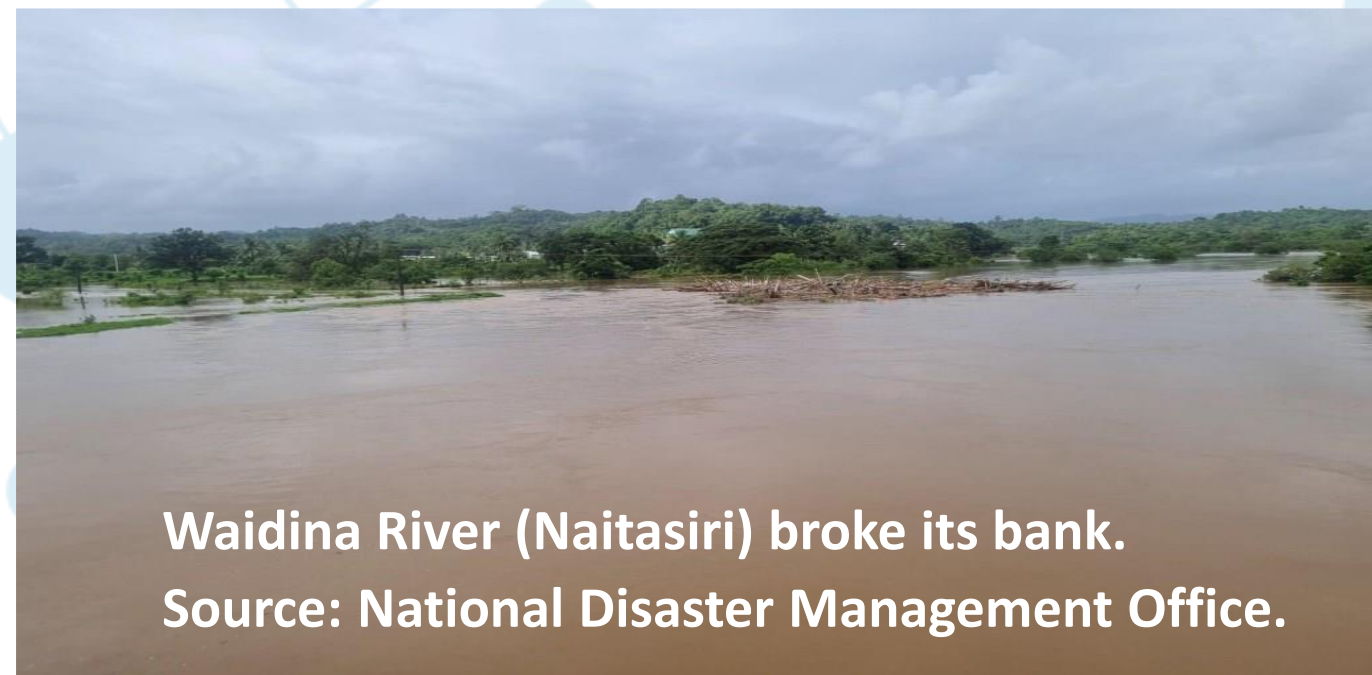
Flooding near Bureta Bridge in Ovalau, Eastern Division on 13th November, 2023. Source: National Disaster Management Office



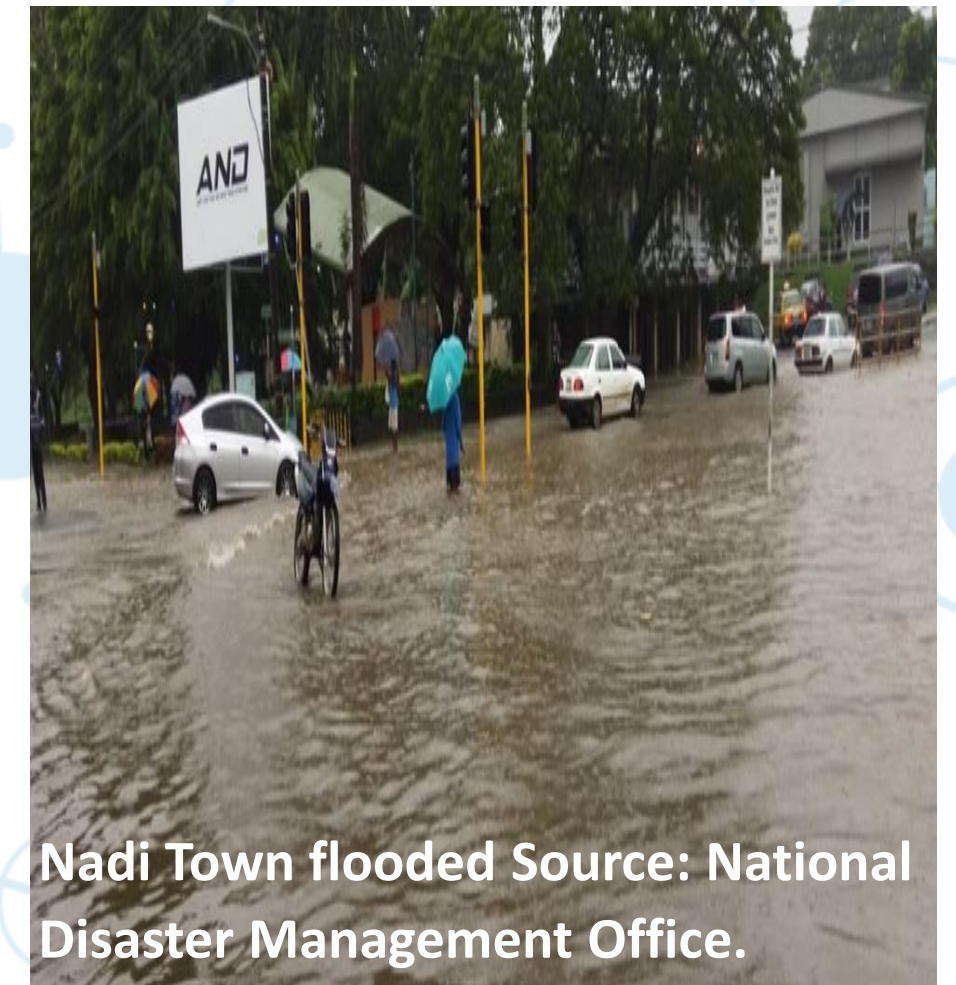
Vehicle queued up at Galoa Bridge in Northern Division due to flash flooding on 18th December, 2023. Source: National Disaster Management Office



Flash flooding in Wainadoi, Navua, Central Division on 28th November, 2023. Source: Fijivillage



Waidina River (Naitasiri) broke its bank. Source: National Disaster Management Office.



Nadi Town flooded Source: National Disaster Management Office.

LANDSLIDE EVENTS

Source: Fiji & Solomon Met



Landslide at Vataleka in Wailoku, Central Division on 15th November, 2023. Source: National Disaster Management Office



Landslide at Kula Street in Samabula, Central Division on 20th January, 2024. Source: National Disaster Management Office



Landslide along Queens after Nakorovou in Central Division on 18th December, 2023. Source: Fiji Roads Authority



Landslide along Dilkusha in Nausori, Central Division on 19th March, 2024. Source: National Disaster Management Office



Pic 7: Tamboko bridge, 31/02/24. PC: Danny Rasile



Sea Swells



Pic 3, 4 & 5: Coastal flooding impacts on road and Lobo community, East Malaita on 22/01/2024

- Impact of High Swells on the 20th -24th of January 2024



Pic 6 & 7: Impact on Manhuki Road, Makira, 22/01/2024



Pic 8: Impact on Suúmoli Wharf approach, Ulawa

Tropical Cyclones



• Observation on Tikopia Island

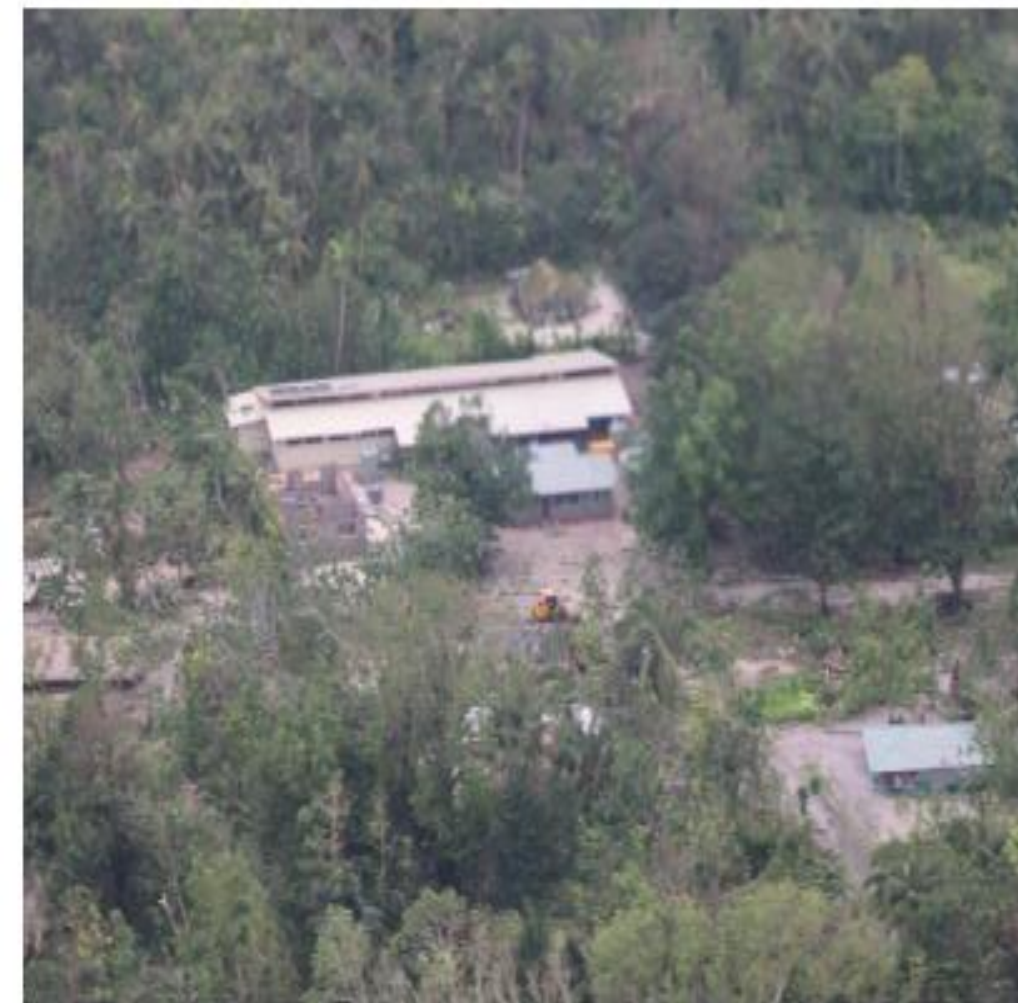


Figure 5: Observation on Tikopia Island as of 24 October 2023. Photo Credit: RAAF

Tropical Cyclones: Lola

Annex 3. Impact Photos received by the NEOC



Corona Market inundated by flood waters from the Tenaru River. Source: NERT



Coastal storm surge at DC Park. Source: NERT



Landslide at Kuratidalo Village, Small Ngella causing damage to a dwelling house and kitchen. Source: P-DOC CIP



Dwelling house destroyed by the landslide at Kuratidalo Village, Small Ngella. Source: P-DOC CIP



Landslide at Sagana Village. Source: Fredrick Dotho



Landslide at Sagana Village. Source: Fredrick Dotho

Cyclone Lola

Summary

Add key points which will be included in the PICOF outcomes statement

- ✓ This year's El Niño event is quite extraordinary from the previous events.
- ✓ Instead of severe shortages of water and droughts, the country was experiencing unprecedented severe droughts and landslides across the highlands, similar to anticipated impacts during La Niña events.
- ✓ PNG experienced a 7.0 magnitude earthquakes also caused havoc to Madang, Sepik and parts of the highlands. The country is now struggling with providing disaster relief to the worst affected areas.



Contact



My Email

Kasis: kinape70@gmail.com - PNG Met

Max Sitai: m.sitai@met.gov.sb - Solomon Met

YU Olivia: olivia.yu@meteo.fr - Meteo France

Arieta: arieta.daphne@met.gov.fj - Fiji Met



My Website

Web address