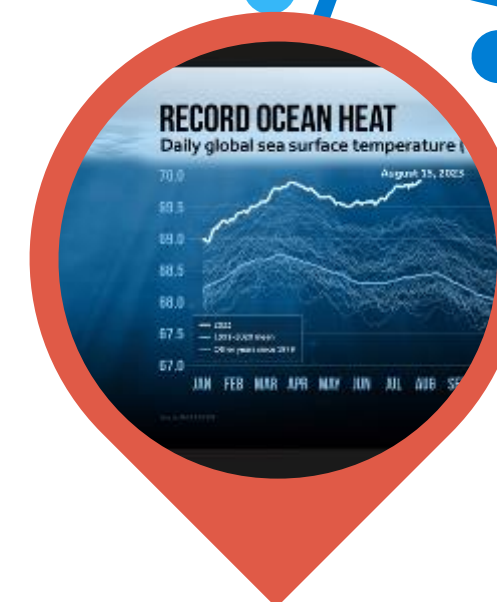


16TH SESSION OF THE PACIFIC ISLANDS CLIMATE OUTLOOK FORUM

PICOF-16

23 APRIL, 2025

ONLINE: ZOOM



REVIEW AND OVERVIEW OF NOVEMBER 2024 TO MARCH 2025 - OCEAN

Moleni Tu'uholoaki (SPC), Grant Smith (BOM)



PACIFIC REGIONAL
CLIMATE CENTRE NETWORK



SPREP
Secretariat of the Pacific Regional
Environment Programme



Pacific Community
Communauté
du Pacifique



COSPPac
Climate Services for the Pacific



NIWA
Taihoro Nukurangi

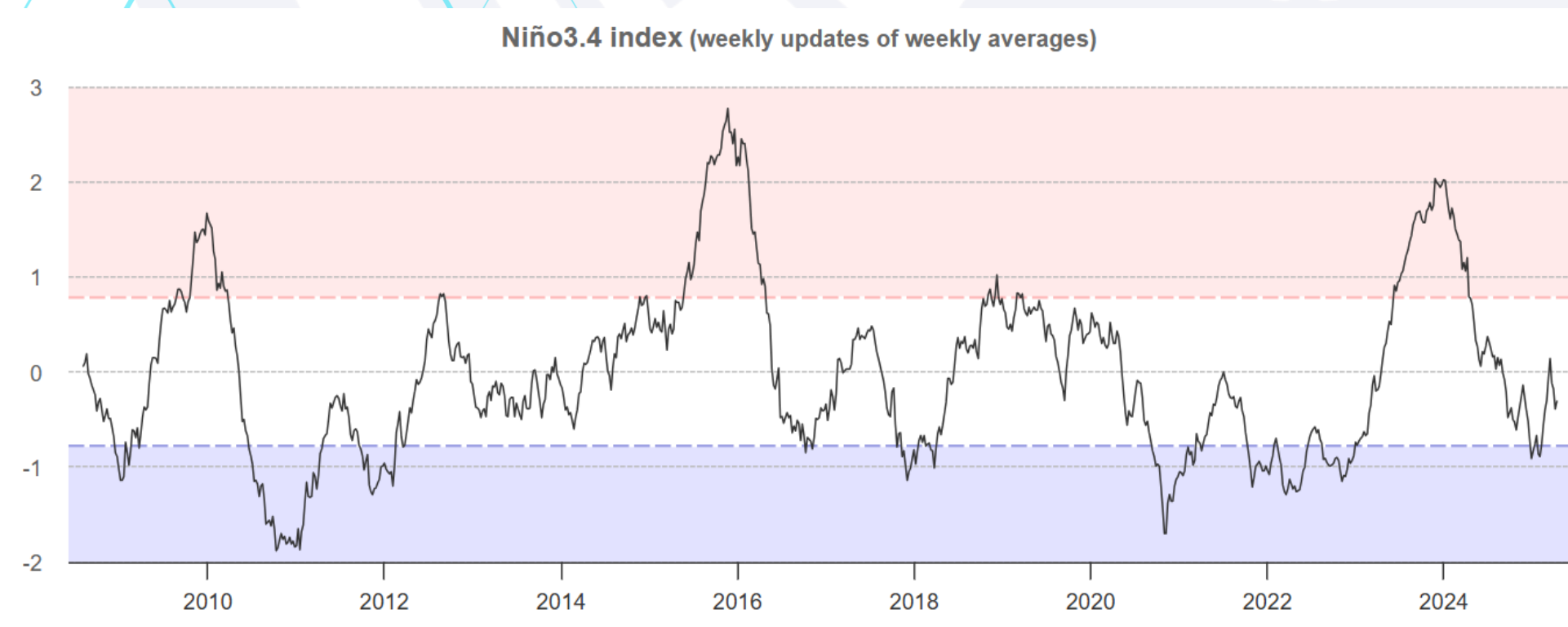
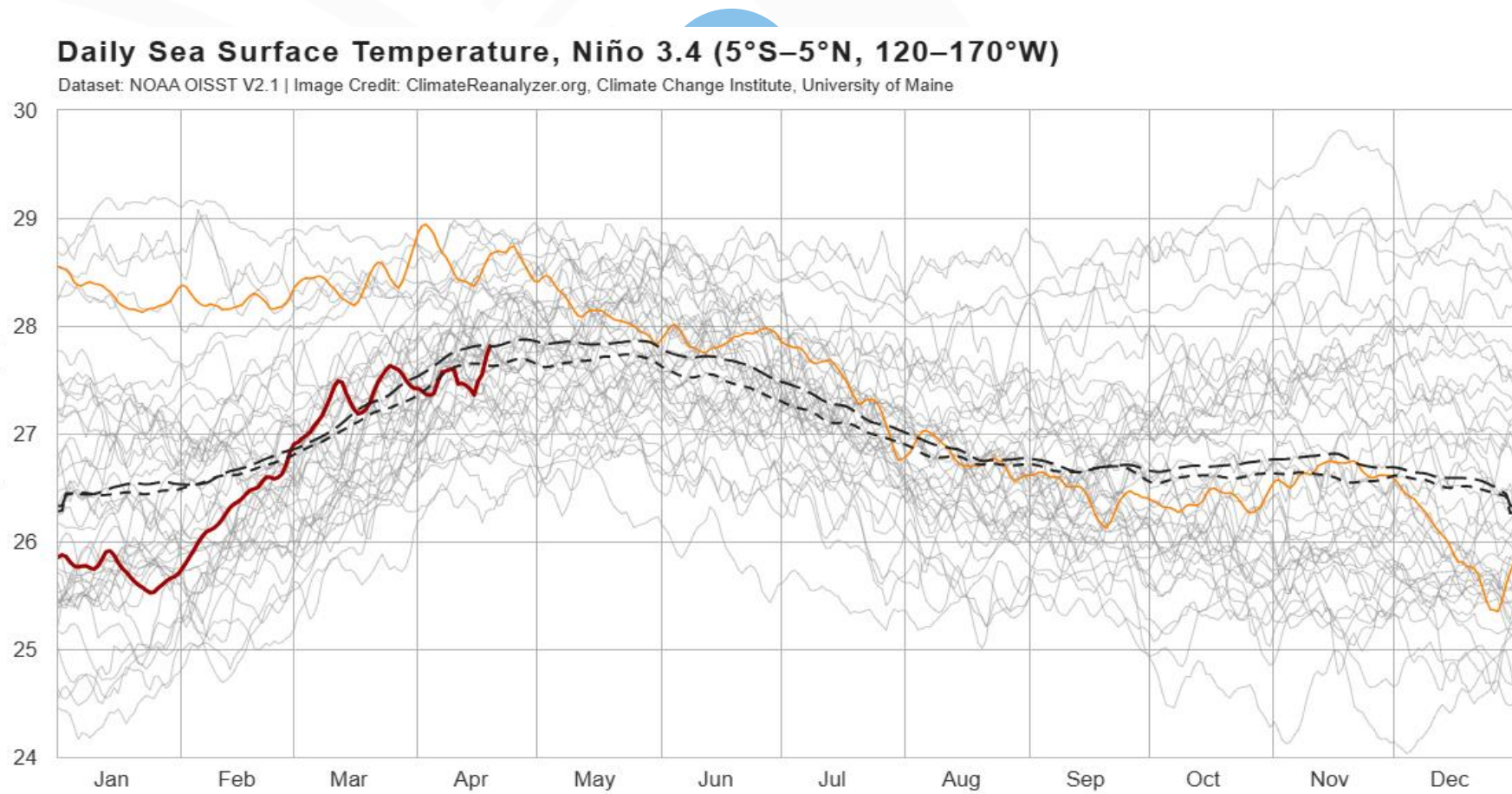
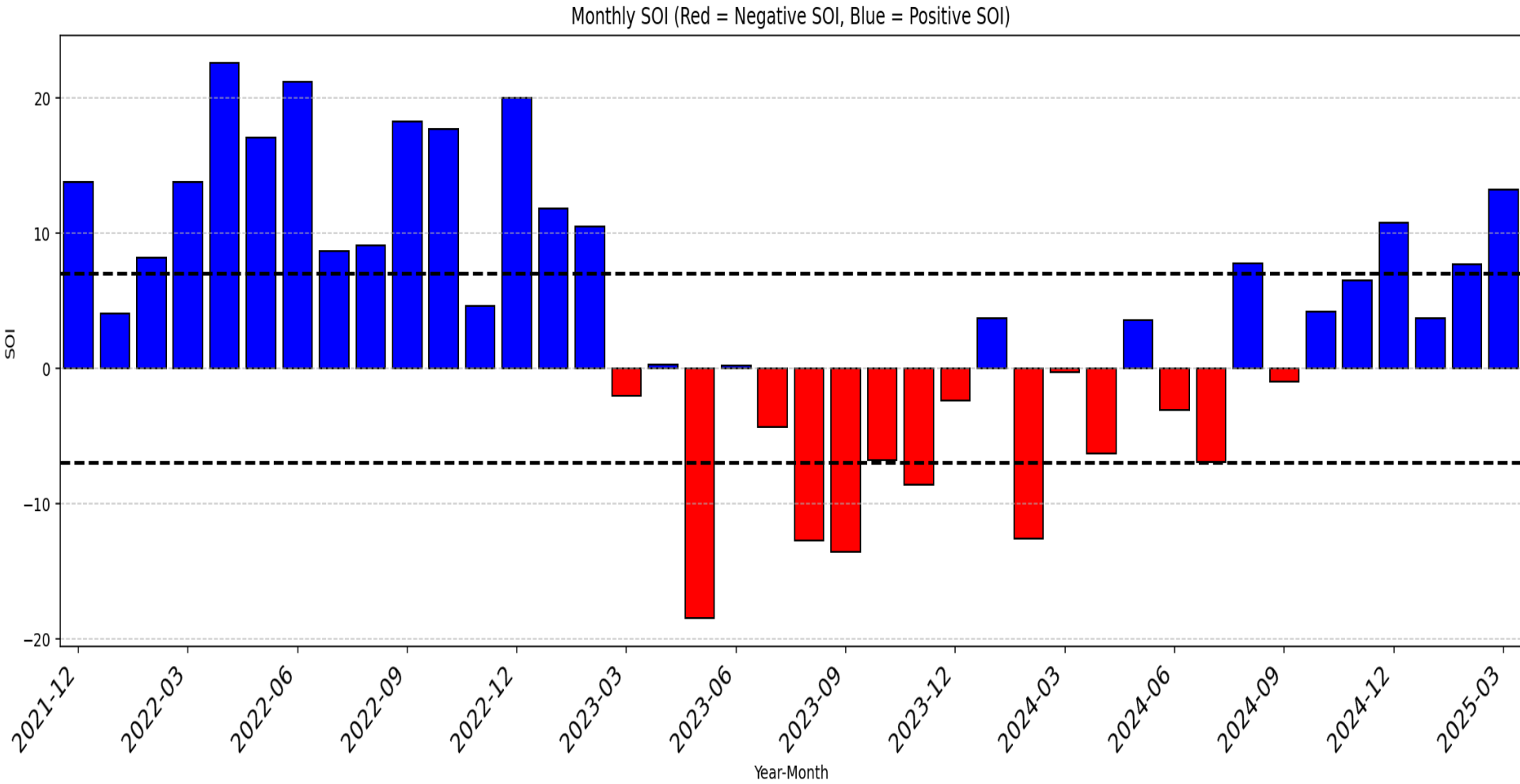
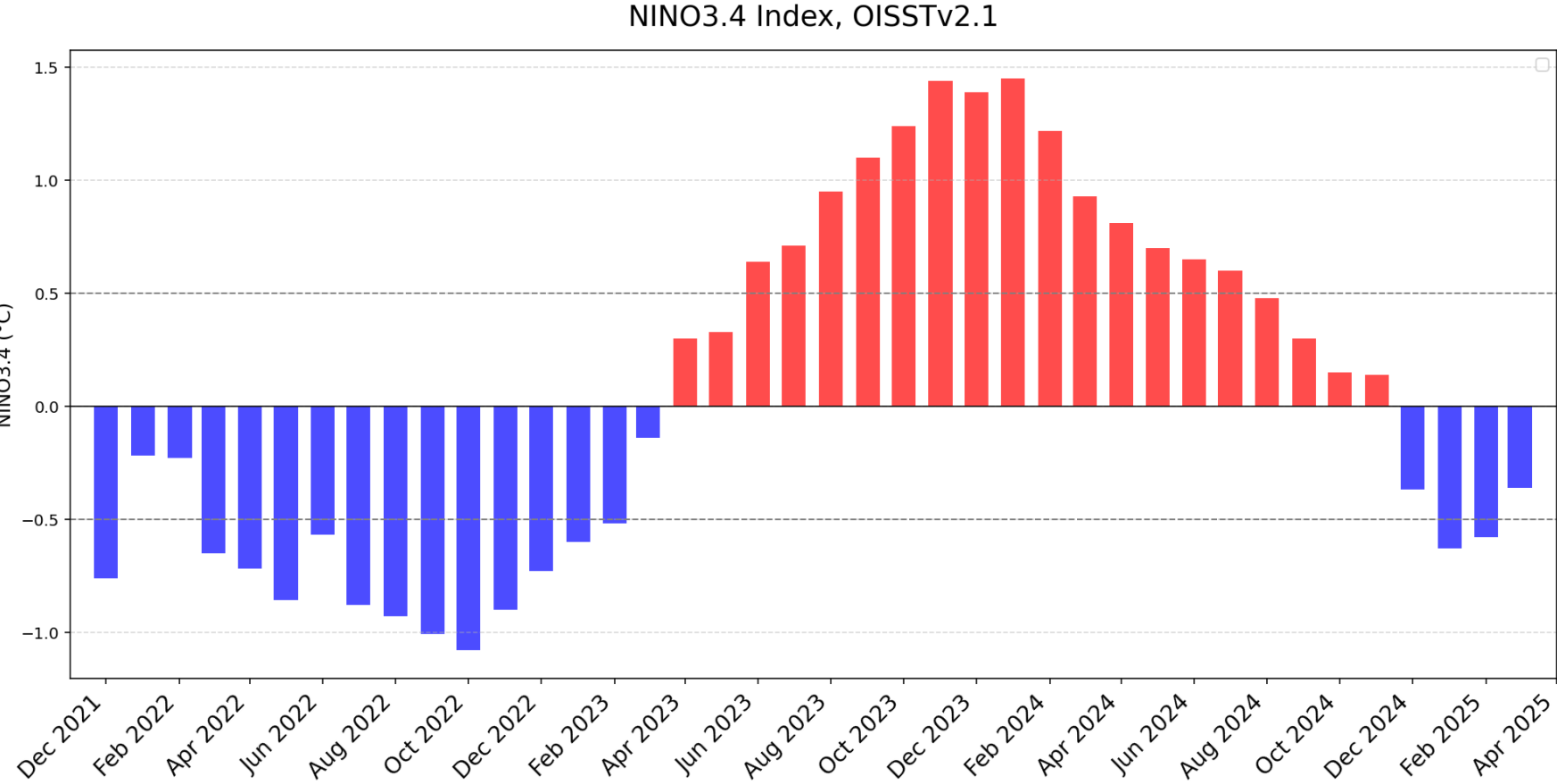


PICOF-15 Outlook (November 2024 - March 2025)

- **La Niña or La Niña-like patterns are the most likely outcome for remainder of 2024. Climate models indicate that should La Niña develop, it would be relatively short-lived with a return to ENSO-neutral in early 2025.**
- **Near to Above normal sea surface temperatures are favoured in regions excluding the central and eastern equatorial Pacific.**
- **Sea level is favoured to be higher than normal around PNG, FSM, the Republic of the Marshall Islands (RMI), Palau, Solomon Islands, New Caledonia and southern part of Tonga. Below normal sea level is favoured around Kiribati, southern parts of Tuvalu, Samoa, northern Fiji, northern Tonga, Niue, parts of Cook Islands, parts of French Polynesia and the Pitcairn Islands.**
- **Coral Bleaching Forecast for PNG, FSM, RMI, Palau, and Nauru**

Outlook Review

•La Niña or La Niña-like patterns are the most likely outcome for remainder of 2024. Climate models indicate that should La Niña develop, it would be relatively short-lived with a return to ENSO-neutral in early 2025.

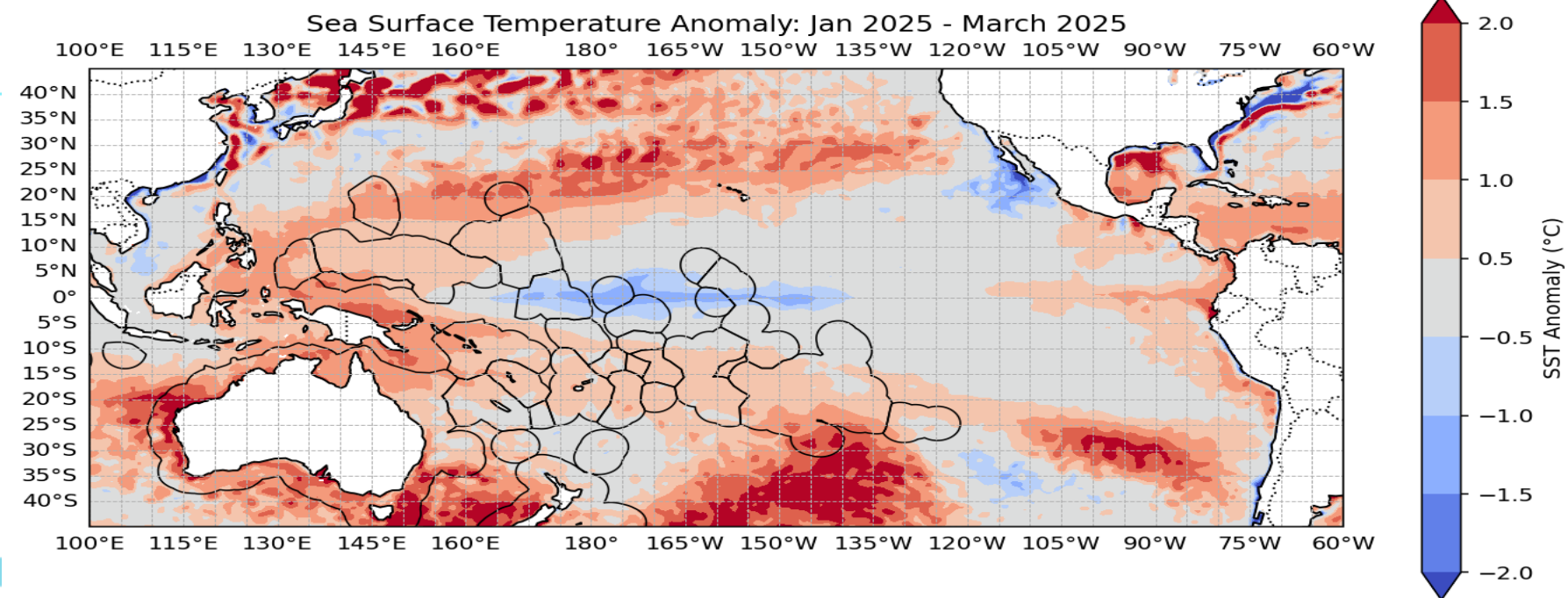
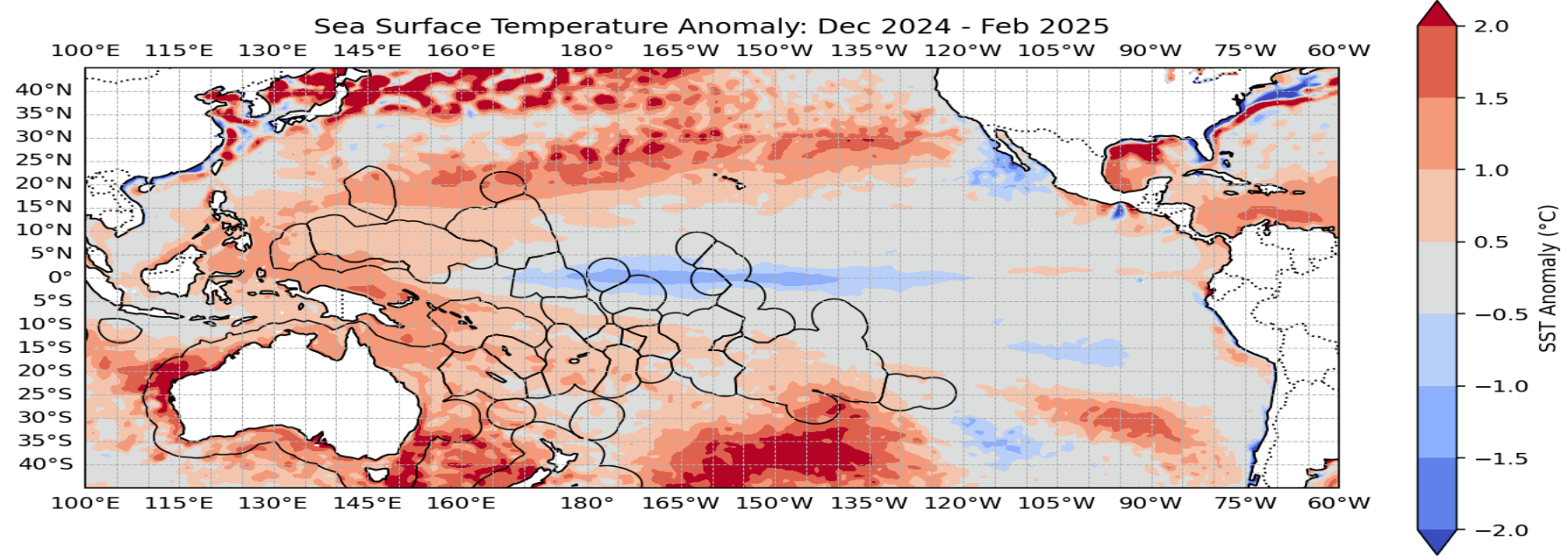
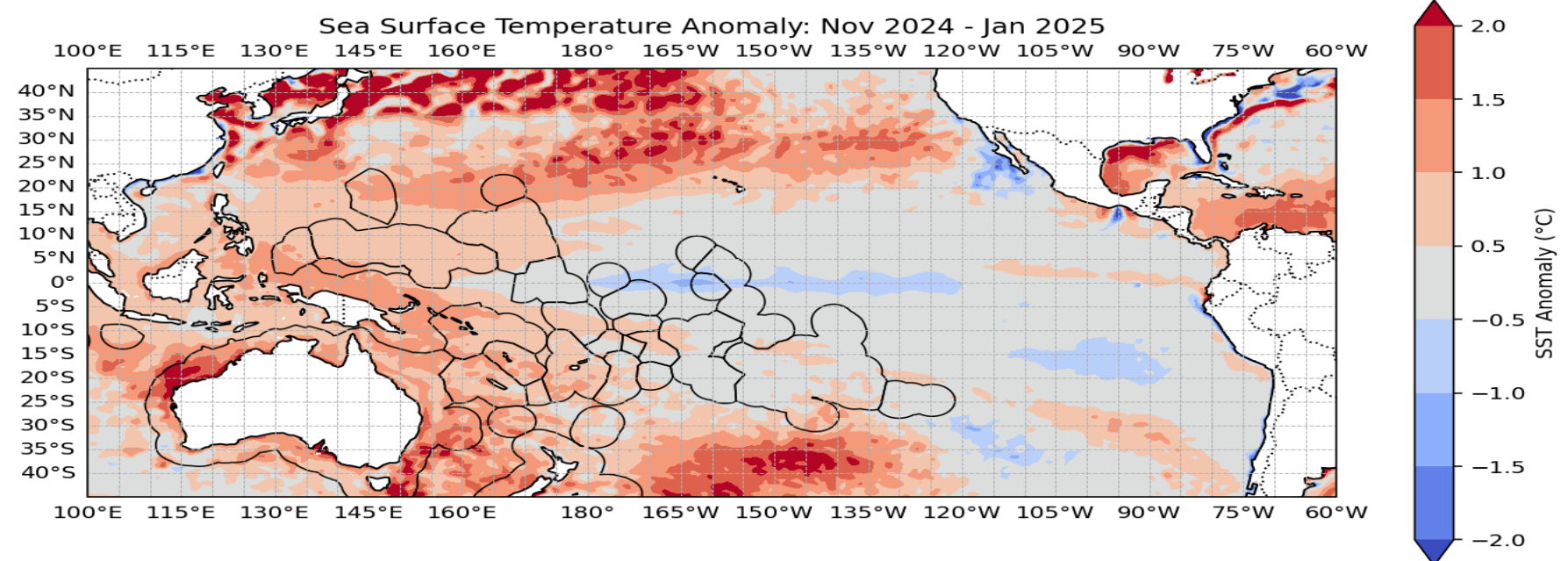
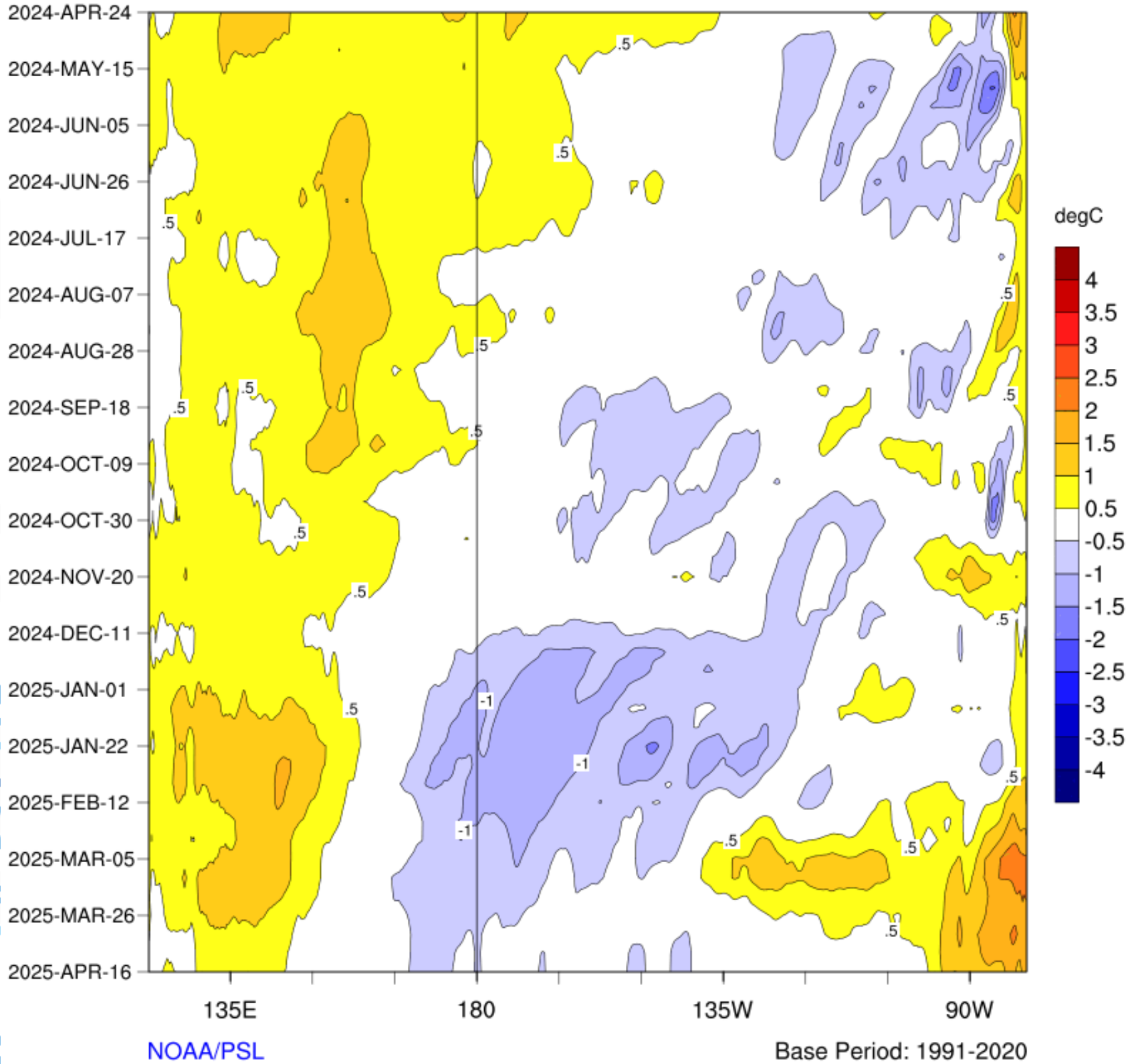


Data from NOAA; <https://climatoreanalyzer.org>

Data from BOM; Southern hemisphere monitoring

SST

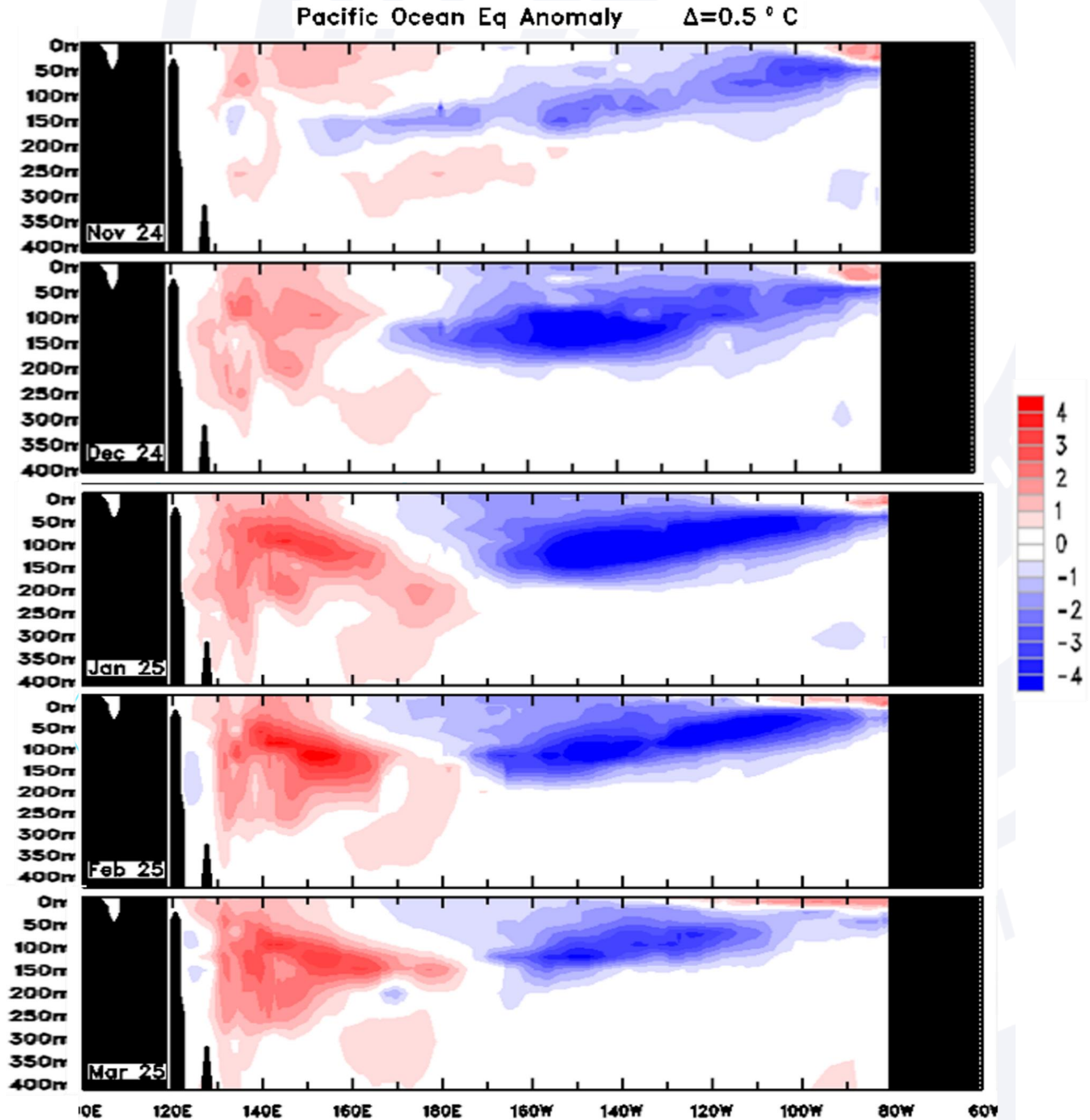
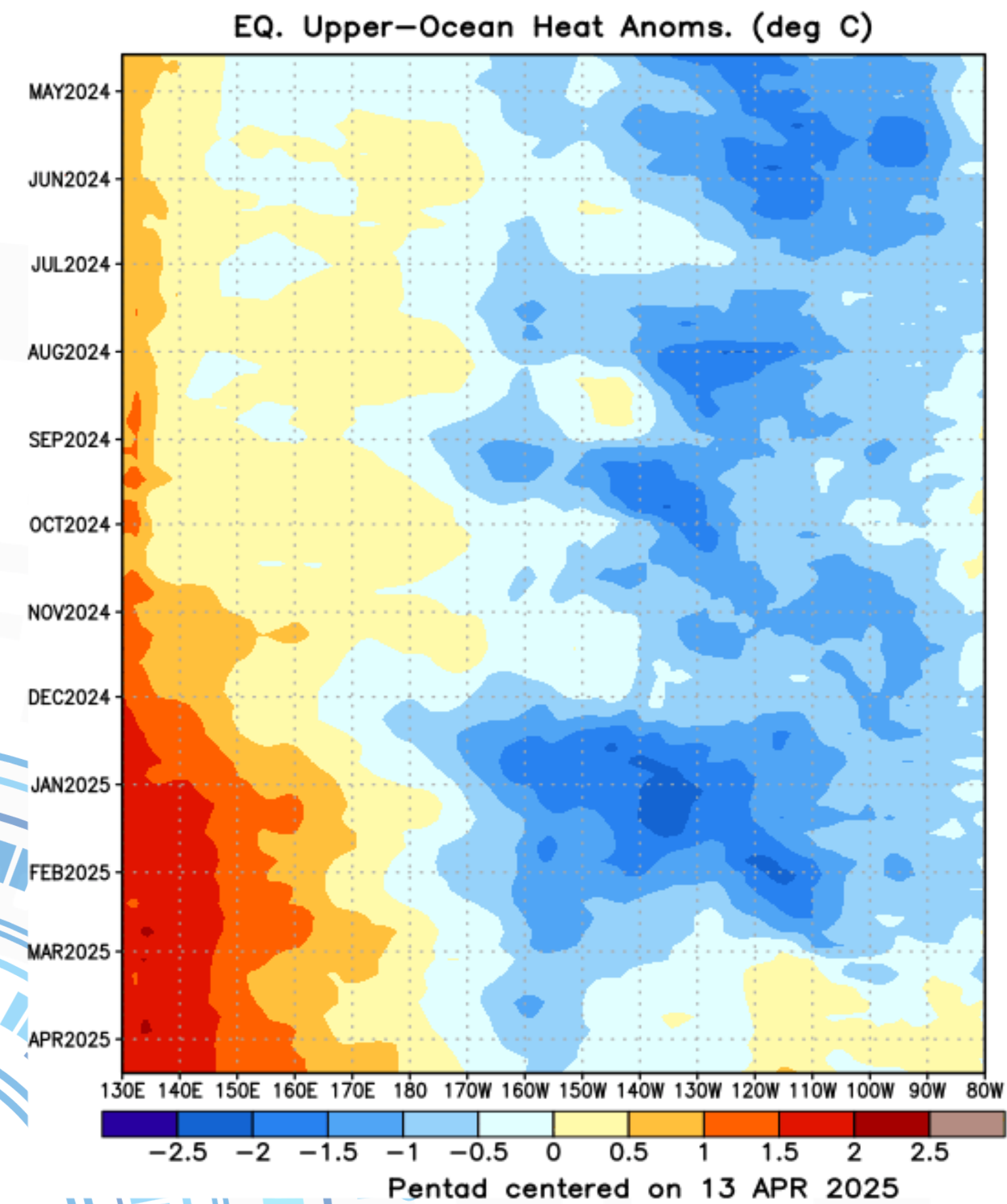
SST Anomalies (3.5N-3.5S)



Source:<https://psl.noaa.gov/map/images/sst/sst.anom.hov.gif>

Data: NOAA (Reynolds)

Subsurface Temperature

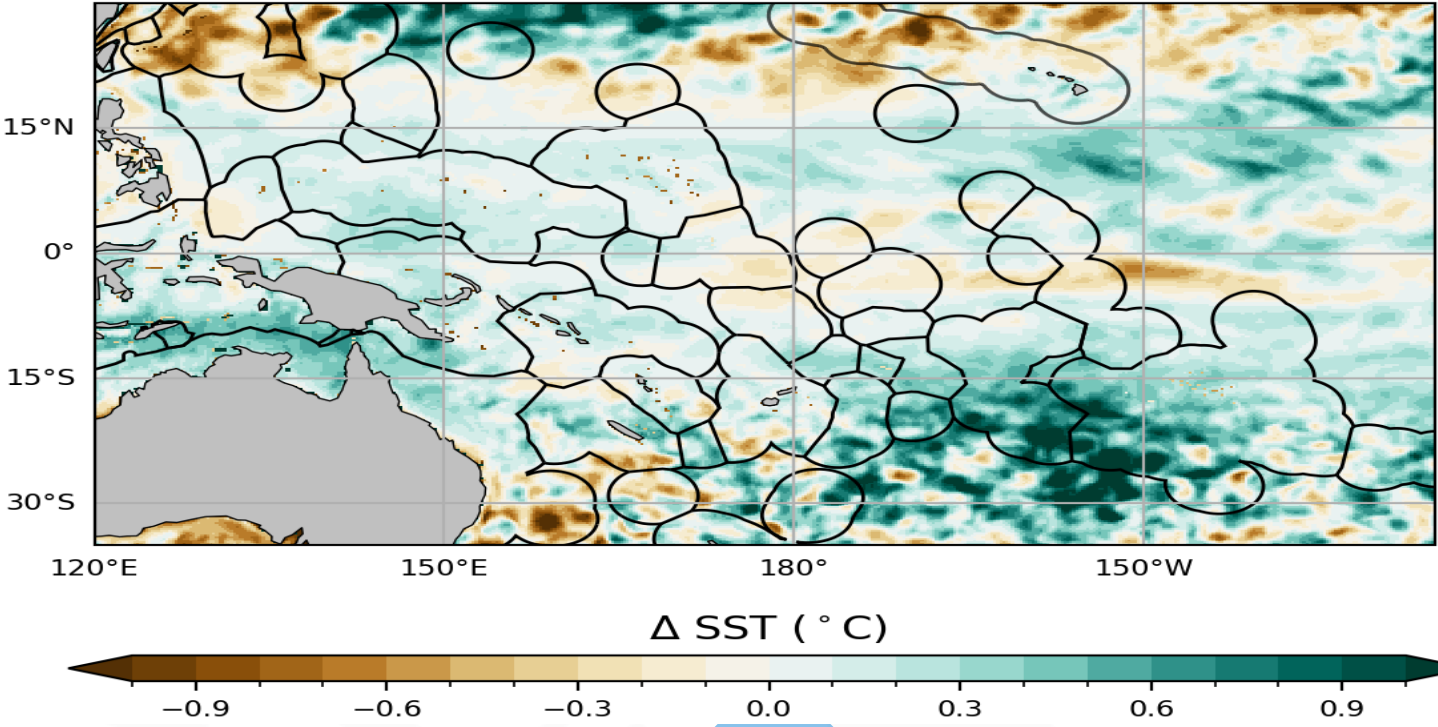


Outlook Review

•ACCESS-S Verification

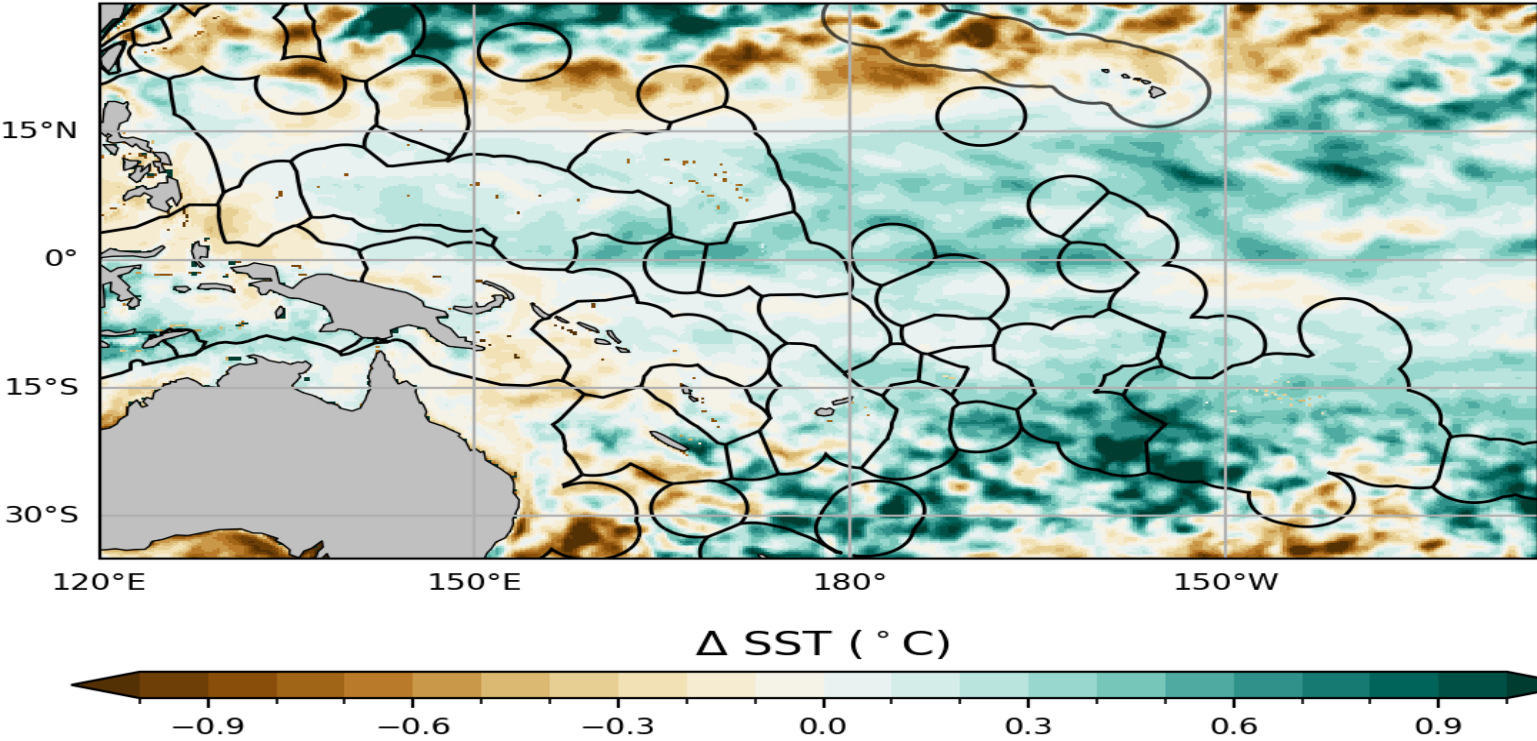
ACCESS-S minus Observations

October to December 2024



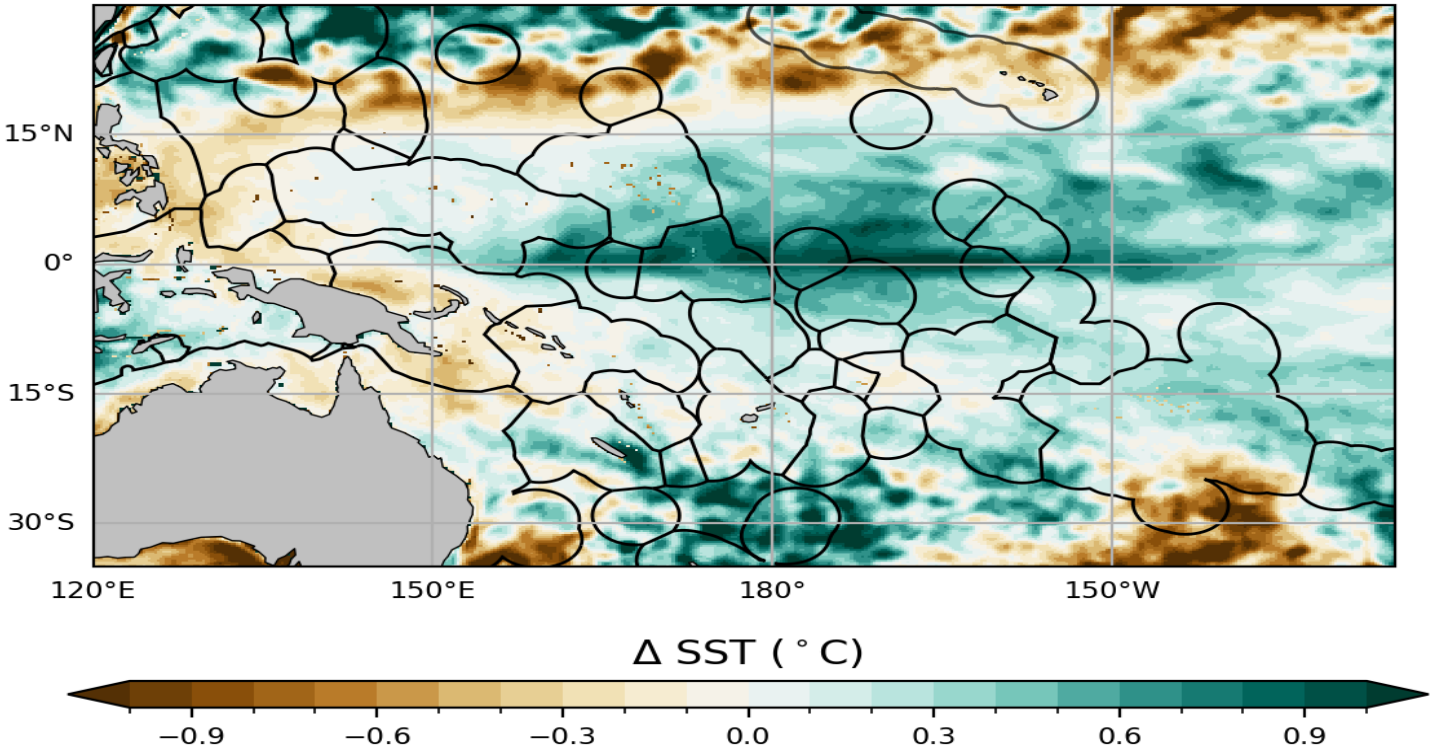
ACCESS-S minus Observations

November 2024 to January 2025

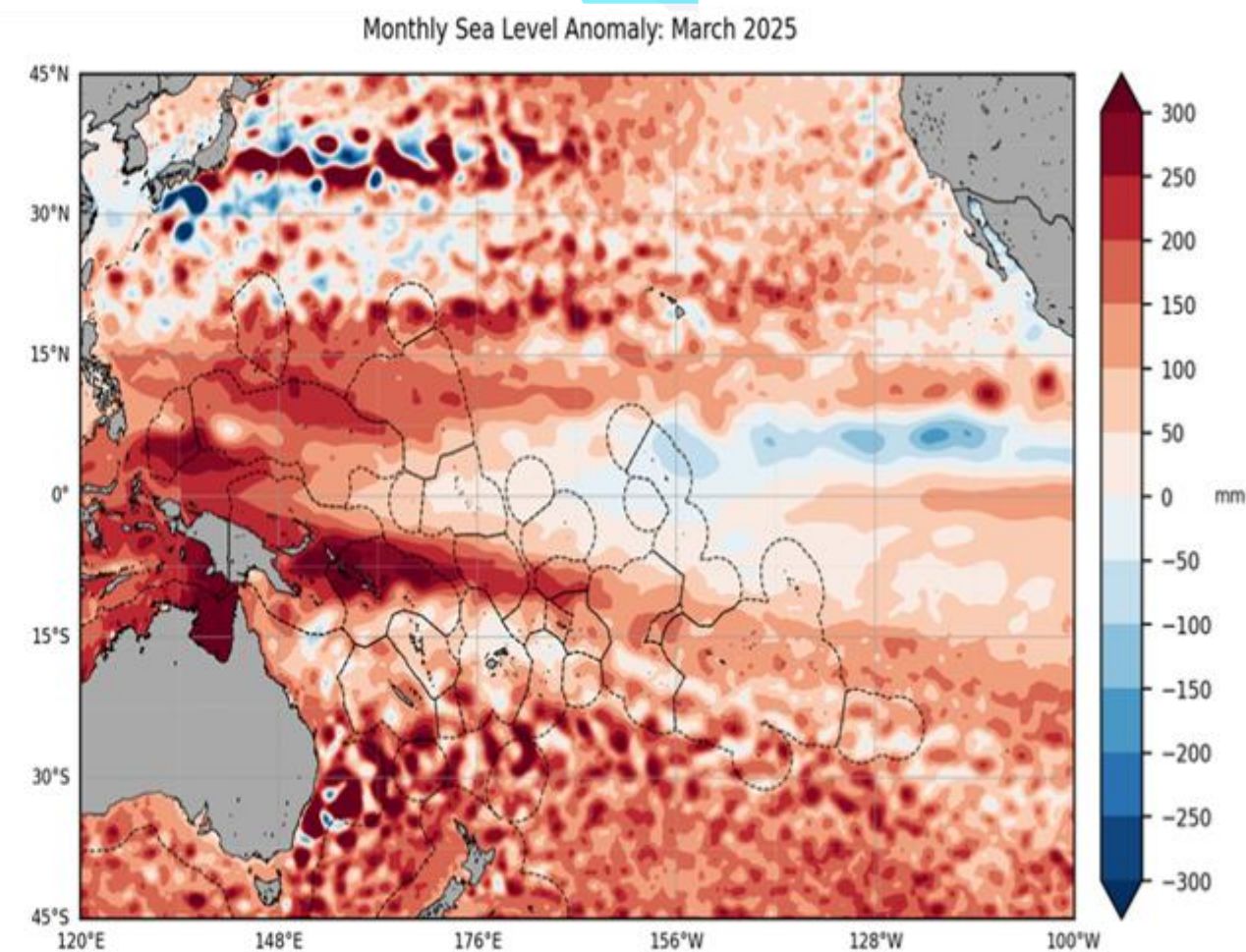
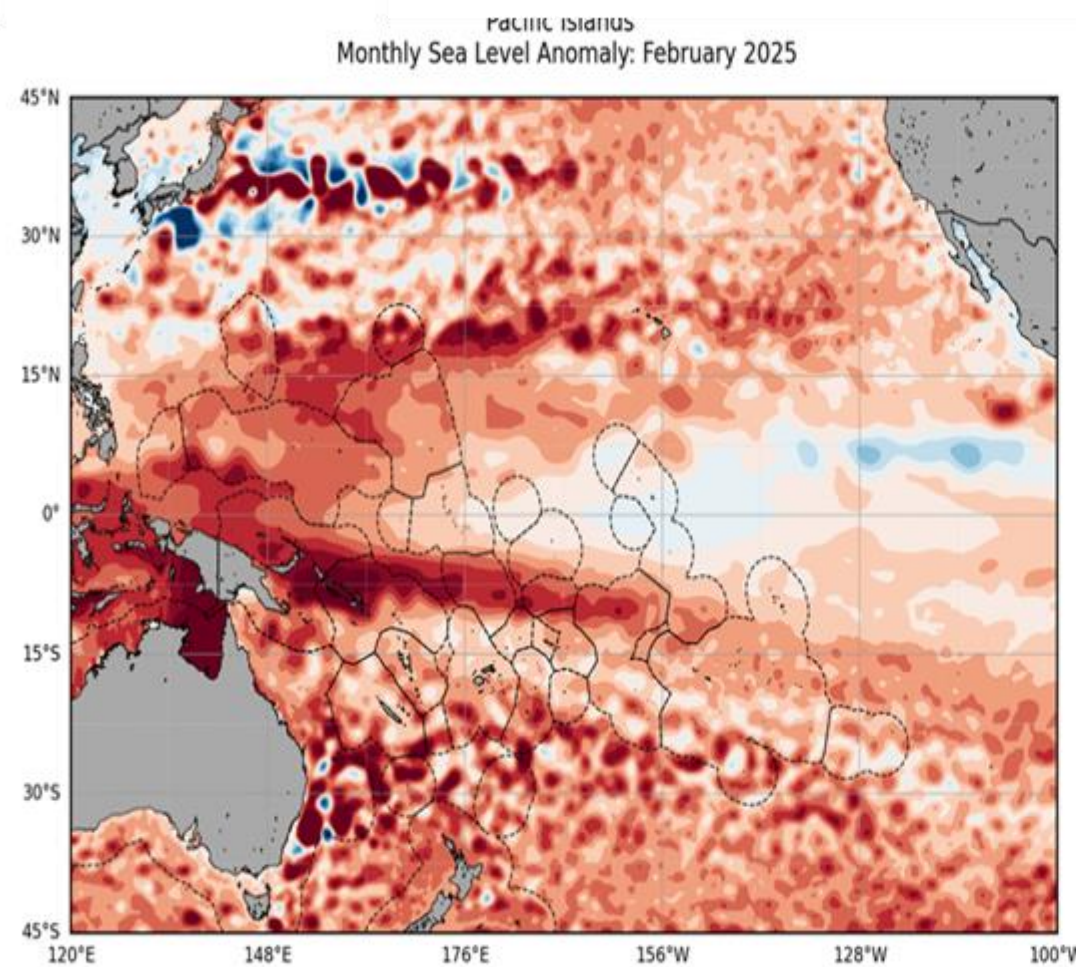
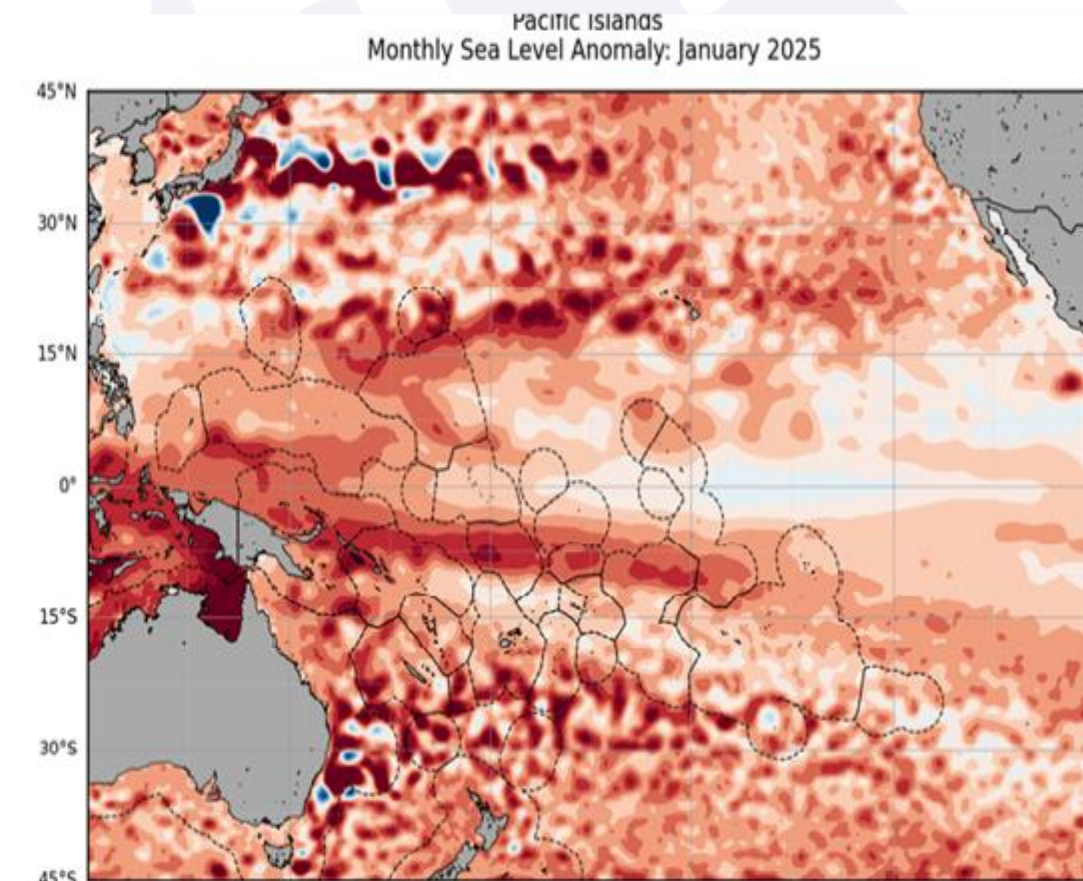
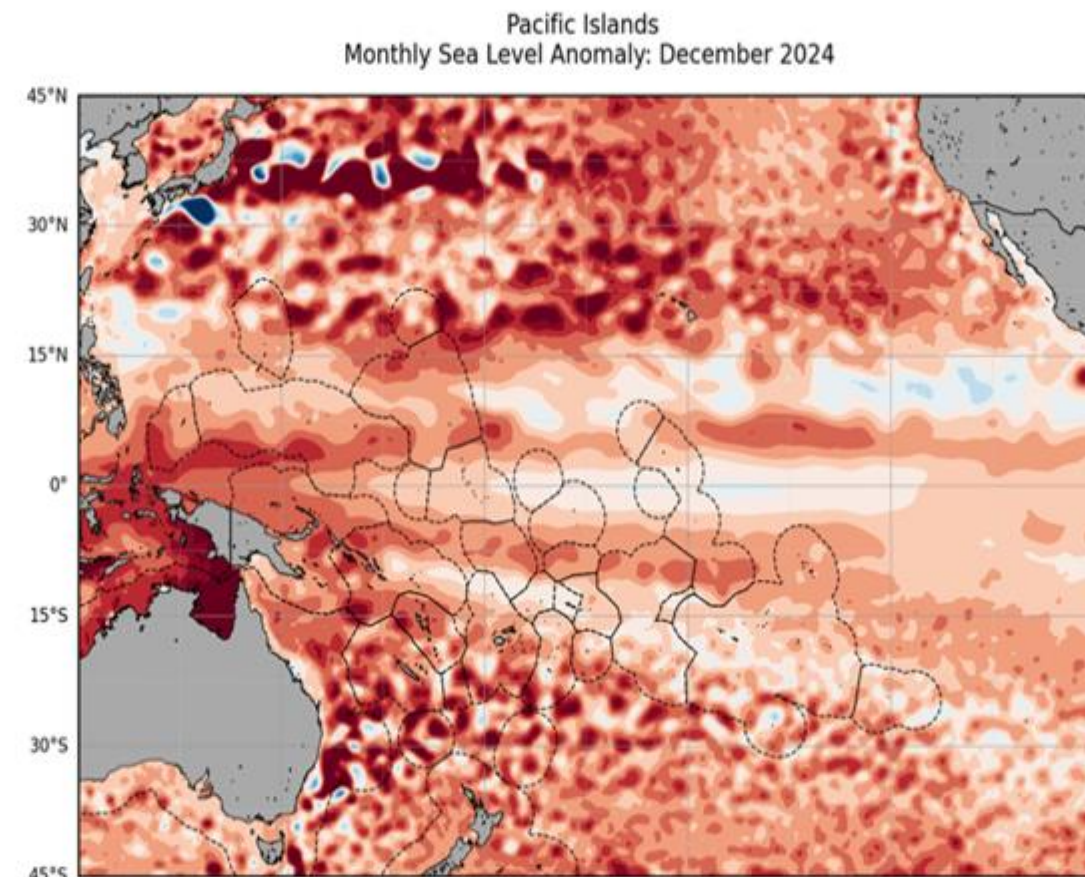
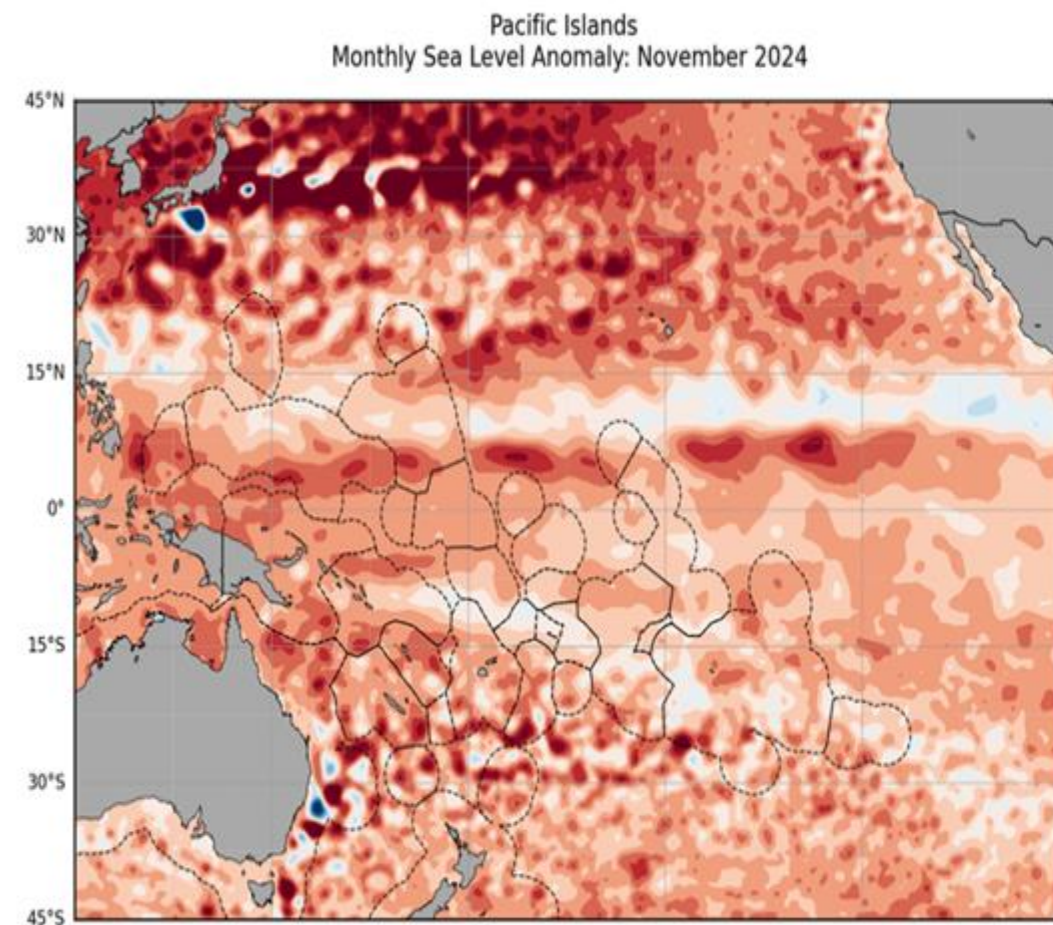


ACCESS-S minus Observations

December 2024 to March 2025

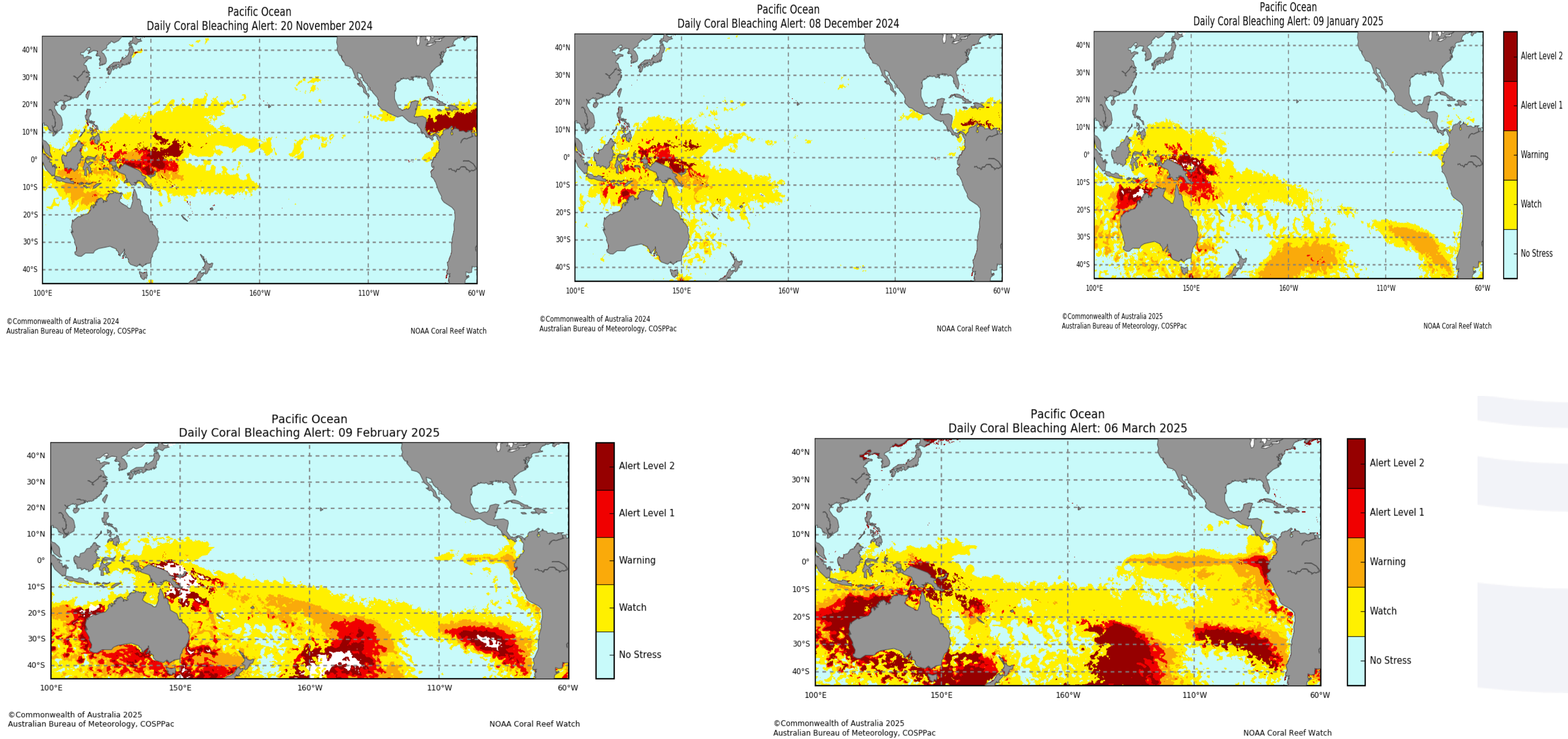


Sea Levels



Source: [CMEMS/Aviso](https://www.aviso.oceanobs.com/)

CORAL BLEACHING



November 2024 to March 2025

Source: NOAA Coral Reef Watch

Summary

- November 2024 to March 2025 conditions align with the PICO 15 outlook. La Niña-like pattern developed at the end of the year, and short lived. Below normal SST observed in part of Kiribati. Elsewhere near to above normal SST.
- Sea level generally higher than normal for most Pacific Island Countries. Below average anomalies observed in part of Kiribati.
- Coral bleaching Alert observed as forecast over PNG from November 2024 to March 2025, Nov-Dec over Palau and FSM, Nov-Nauru and RMI. Observed but not forecast over Solomon Is, Vanuatu, patches over Fiji & Tonga

THANK YOU!

molenit@spc.int; grant.smith@bom.gov.au

