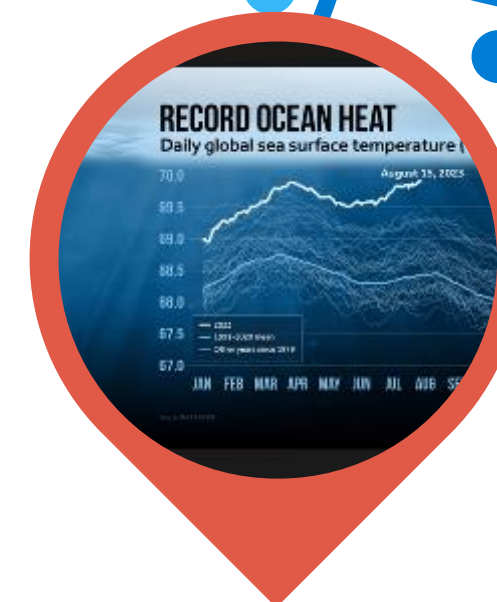


# 16<sup>TH</sup> SESSION OF THE PACIFIC ISLANDS CLIMATE OUTLOOK FORUM

## PICOF-16

23 APRIL, 2025

ONLINE: ZOOM



# MELANESIAN COUNTRIES CLIMATE IMPACTS





# FIJI



**PACIFIC REGIONAL  
CLIMATE CENTRE NETWORK**



**SPREP**  
Secretariat of the Pacific Regional  
Environment Programme



Pacific Community  
Communauté  
du Pacifique



**COSPPac**  
Climate Services for the Pacific



**NIWA**  
Taihoro Nukurangi





# FLOODING EVENTS



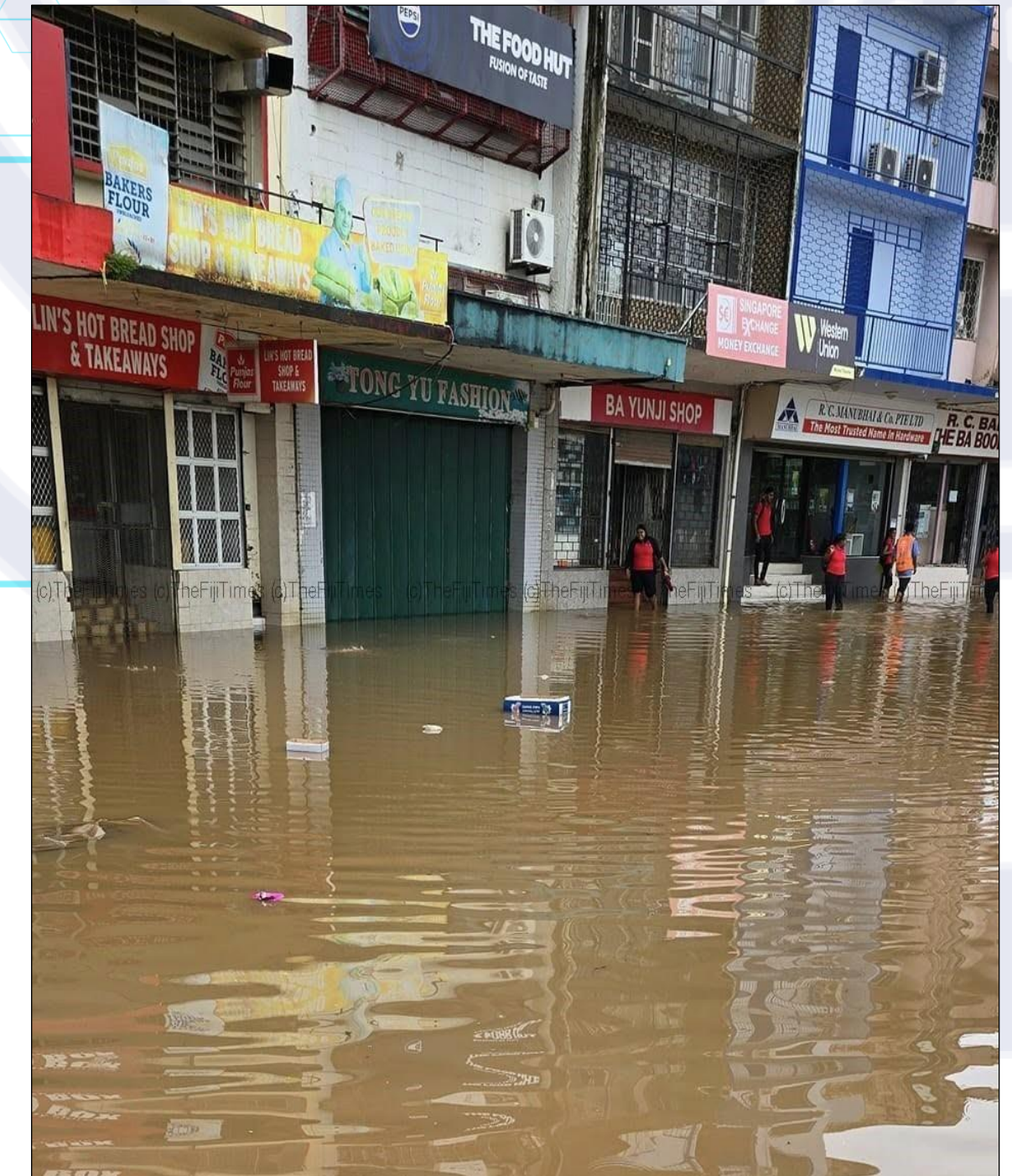
Flash Flooding in Wailoku, in the Central Division from localized heavy rainfall on 26<sup>th</sup> October.

Source: Fiji Roads Authority



Inundation of the entrance to Nadi town, in the Western Division on 25<sup>th</sup> December.

Source: Fiji Police Force



Heavy flooding leading to the closure of Ba town, in the Western Division on 31<sup>st</sup> January.

Source: The Fiji Times



# LANDSLIDES



Landslide in Vunisea, Kadavu, in the Eastern Division on October 18<sup>th</sup>.

Source: Fiji Roads Authority



Landslide cutting off passage through Nabukaluka Delailasakau Road in Naitasiri, in the Central Division on October 26<sup>th</sup>.

Source: Fiji Roads Authority



A road dropout occurred in Nabulini in the Central Division on 25<sup>th</sup> December during a period of heavy rainfall.

Source: The Fiji Times

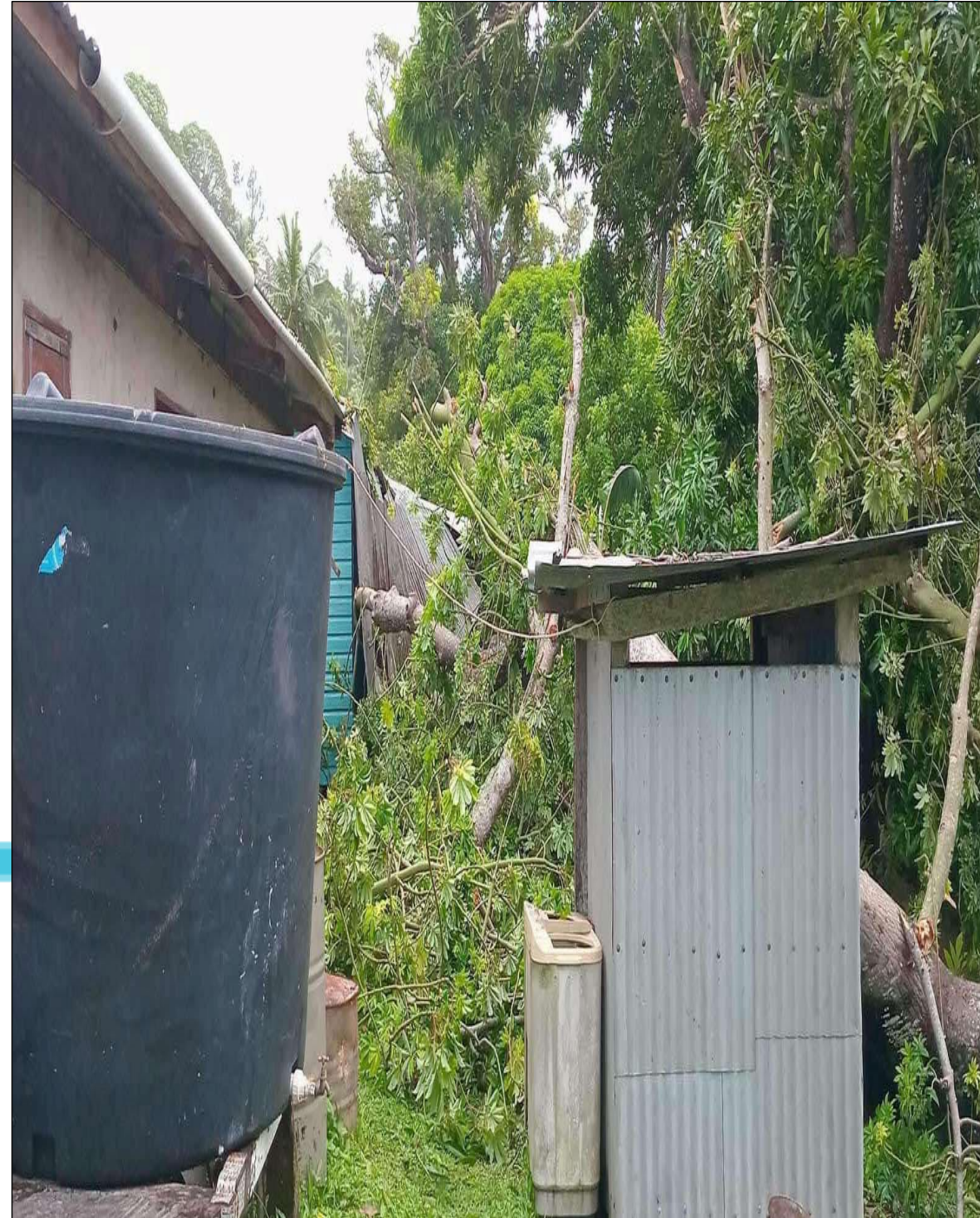


## TC RAE



Damages to the roof of a home due to strong winds in Komo Island, Lau, in the Eastern Division on 25<sup>th</sup> February.

Source: MaiTV



A home partially damaged by a fallen tree in Cicia Island, Lau in the Eastern Division on 25<sup>th</sup> February.

Source: Fiji Sun.



Fallen trees in the middle of Tokalau community in Kabara Island, Lau in the Eastern Division on 25<sup>th</sup> February.

Source: Fiji One News.



# COASTAL INUNDATION



Minor coastal inundation was experienced over Mali Island in Macuata, in the Western Division on 18<sup>th</sup> October due to northwesterly winds (onshore flow during the high tide).

Source: The Fiji Times.



# NEW CALEDONIA

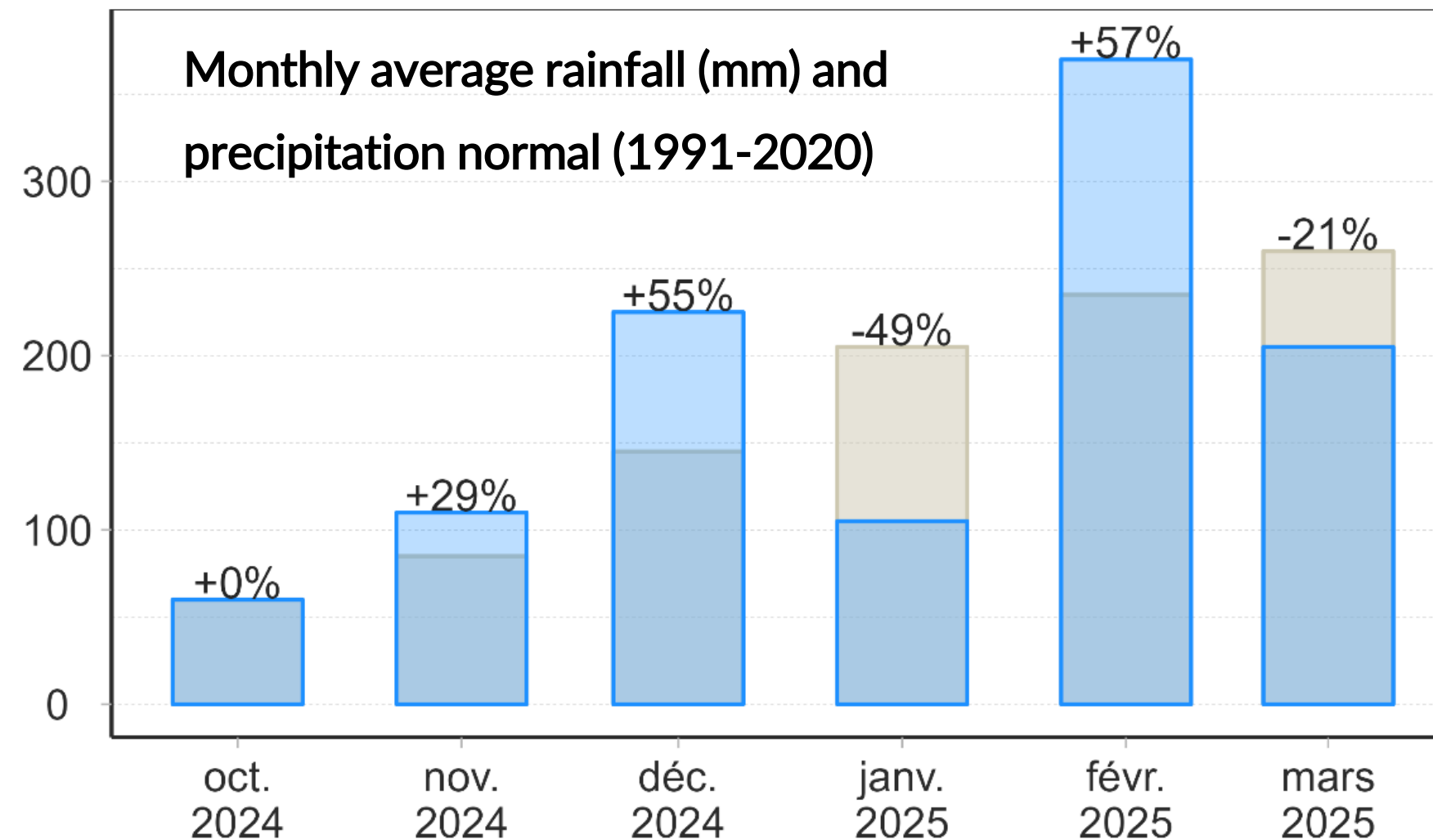




# Monthly precipitation over the last 6 months

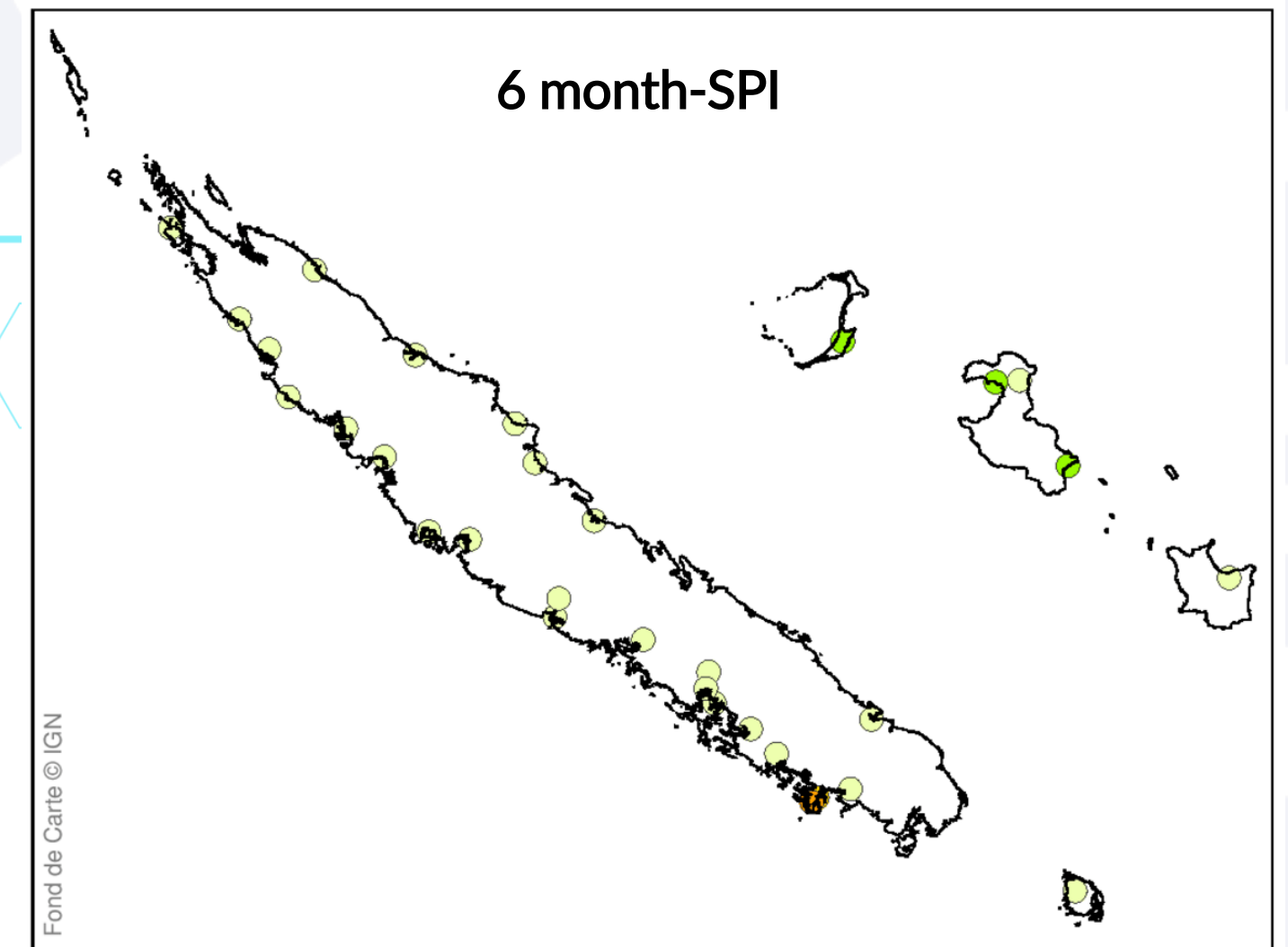
Source: Meteo-France

cumuls mensuels (mm)



Monthly average rainfall from 16 referenced rain gauge observations.

Over the last 6 months average cumulative rainfall was 1075 mm, which is close to normal (+9% above average). February 2025 ranks as the 9th wettest February since 1955.



Exceptionnellement sec  
Inhabituellement sec  
Plus sec que la normale  
Autour de la normale  
Plus pluvieux que la normale  
Inhabituellement pluvieux  
Exceptionnellement pluvieux

Grande Terre : near normal conditions except on the island's south-western quarter which experiences moderately dry to very dry conditions. Loyalty Islands : moderately humid in Ouvéa and Lifou and near normal in Mare.

*Nota bene : 1981-2010 is still used as the reference period for calculating SPI*



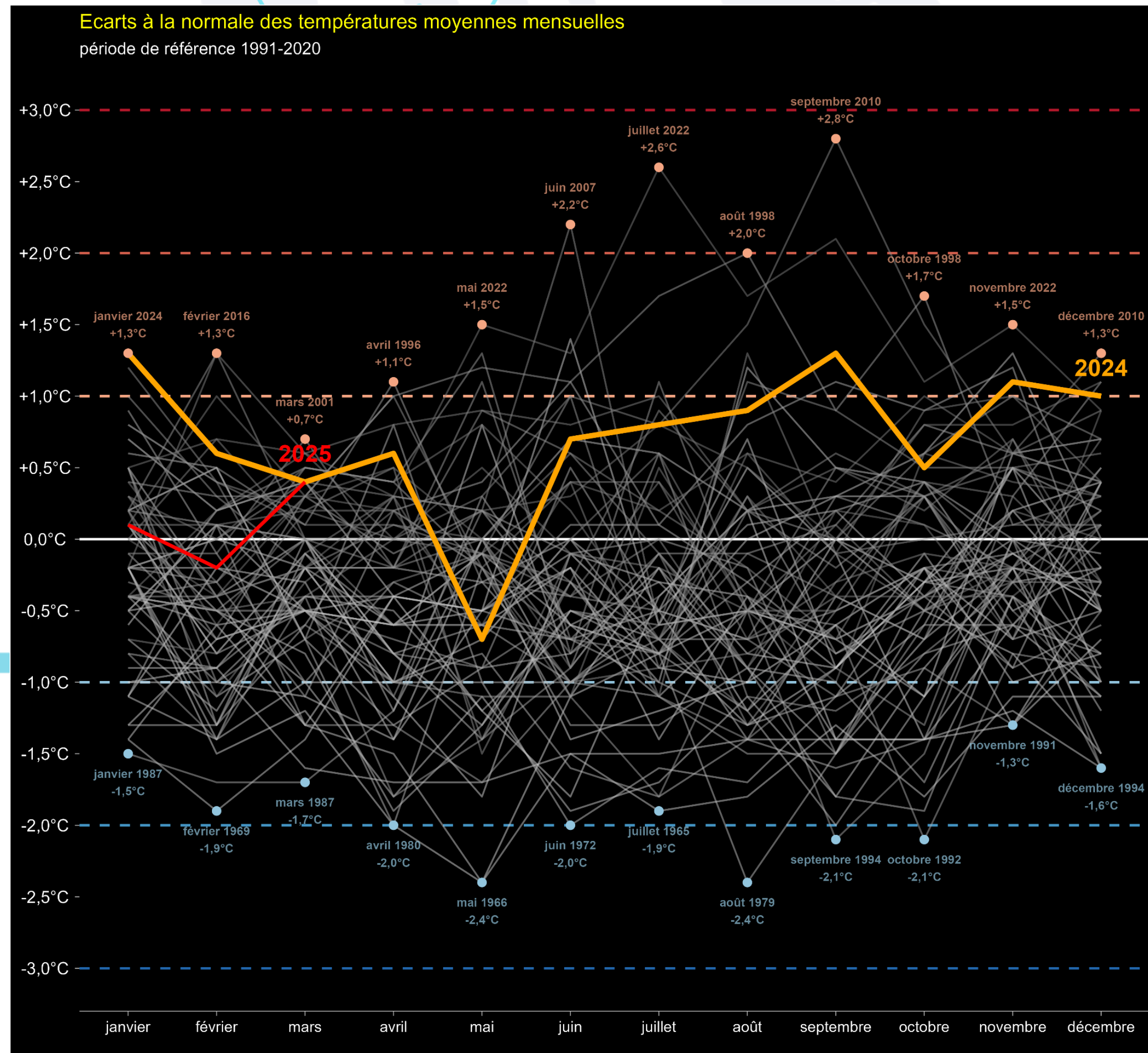
# Anomalies in monthly air temperature for New Caledonia

Compared to 1991-2020 averages

An unusually warm end 2024. December 2024 was  $+1.0^{\circ}\text{C}$  above the 1991-2020 normal, making it the 2nd warmest December since 1955.

A gloomy start to 2025, making temperatures seem almost normal....

Source: Meteo-France





# Notable events



©NC La 1ère

## Inter-island boat rotations cancelled

2025/02/11 : Rain and gusts of wind prevents the catamaran from proceeding to sea



©NC La 1ère

## Grounded aircraft

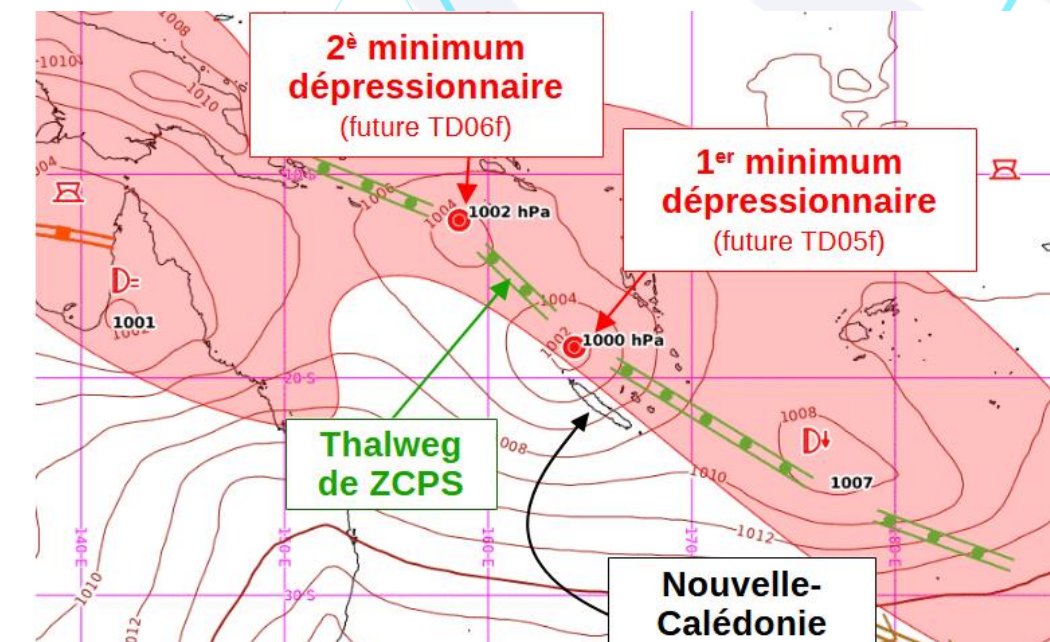
2025/02/03 : Up to and including February 7, all Air Calédonie flights have been cancelled. The company is citing technical problems, which have grounded its two aircraft, and unfavorable weather conditions.



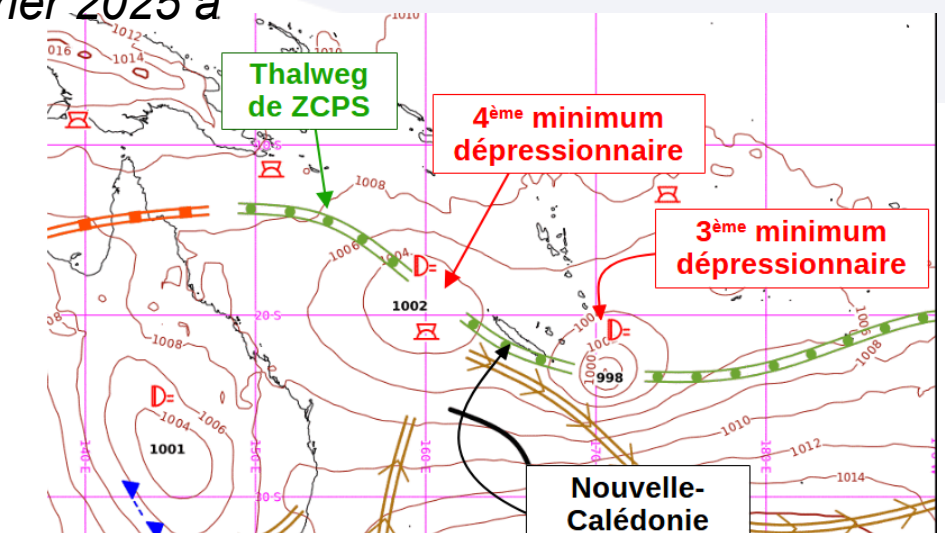
## Impassable roads

2025/02/12 : The road linking Thio to Canala is completely blocked

The passage of 4 weak tropical depressions from **February 2 to 15, 2025** in the vicinity of New Caledonia has caused major disruptions, bringing *transport to a standstill and leading to the postponement of the start of the school year in many schools.*



Carte d'analyse du dimanche 02 février 2025 à 11h00.



Carte d'analyse le vendredi 14 février à 23h loc..

## Not for drinking...

On the east coast of Grande Terre, bad weather not only leads to flooding and landslides, but also affects water distribution and potability.



# SOLOMON ISLANDS



**PACIFIC REGIONAL  
CLIMATE CENTRE NETWORK**



**SPREP**  
Secretariat of the Pacific Regional  
Environment Programme



Pacific Community  
Communauté  
du Pacifique



**COSPPac**  
Climate Services for the Pacific



**NIWA**  
Taihoro Nukurangi







**Heavy rain and flooding causing inundation at Anthony Saru Building on October 31<sup>st</sup> 2024**

Source: Alex Rilifia Facebook uploads



# Landslide due to heavy Rainfall



Heavy rain had resulted flooding in the Kukum highway in East Honiara on 28<sup>th</sup> of December, 2024

Source: Solomon Star news online



Heavy rain causing landslide and a young man tragically lost his life after a retaining wall behind his house collapsed on 28<sup>th</sup> December, 2024.

Source; Jafaith facebook post





## Heavy rain causing flooding and water logged at KG school on 03/03/2025

Source: SI Met admin facebook Page





## Heavy rain and flooding along the Kukum highway and hot bread area on 6<sup>th</sup> of March, 2025

Source: Rilifia Alex Facebook shared Post



# PAPUA NEW GUINEA





# VANUATU





# Late December 2024 – Holiday Heavy Rains on Efate



Source: teleSUR



Source: ABC News

In the week of Christmas 2024, Efate in Shefa Province experienced heavy rainfall and flooding following a magnitude 7.3 earthquake on December 17 that had already triggered hundreds of landslides and displaced over 1,200 people. Despite severe weather impacts between December 23 to 25, including river swelling, road damage, and village evacuations, there were no confirmed casualties.



# Late Dec 2024 – Early Jan 2025 – Dengue Outbreak



**Source: VBTC**

Between 28 December 2024 and 5 January 2025, Vanuatu's Ministry of Health reported a confirmed case of dengue detected at Vila Central Hospital on 31 December, resulting in hospitalization. Under national health protocols, even a single case is considered an outbreak, prompting immediate response. - VBTC



# Late Jan – Early Feb 2025 – Tropical Depression & Strong winds



Source: Facebook  
Posted by Morsen Tavptahn – NW Malekula



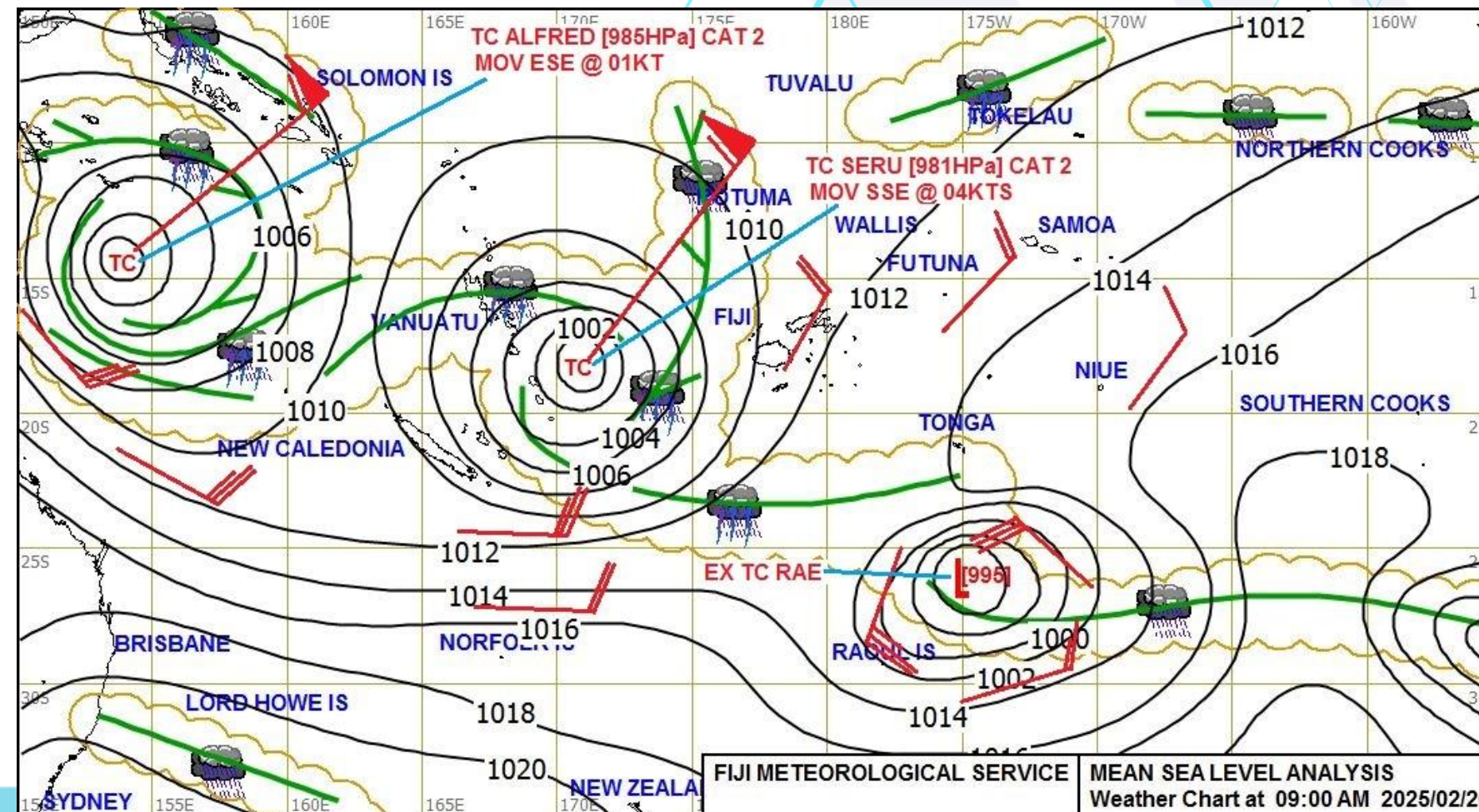
Source: Facebook  
Posted by Peter Peter - Santo

In late January to Early February, a low pressure system developed NW of Vanuatu. This system (Tropical Disturbance 05F by Fiji Met) never reached cyclone strength, but moved close to the islands causing heavy down pour and strong winds over Sanma, Malampa, Shefa and Tafea.

**Impacts reported:** Heavy rain, gusty winds, damage to properties and gardens, and more portholes. No casualties recorded.



# February 2025 – Tropical Cyclone Seru (Category 2)



Source: FijiMet

TC Seru (Cat 2) formed in late February northeast of Vanuatu and quickly intensified into a Category 2 Cyclone. It moved slowly south along Vanuatu's eastern side, mostly affecting the southern islands.

## Impacts reported: Damage – minimal.

Gale to storm-force winds, isolated heavy down-pours, rough seas. Damage to weaker structures reported, banana and breadfruit trees, No casualties reported.

**Quote from Isso Nihmei from Futuna:** “The weather here is dark, with thick clouds covering the villages down to the shoreline. There are occasional heavy rains, but we are fortunate that our communication tower is still standing, allowing us to access the internet and make calls. Strong winds hit us from midnight until this morning, and they continue to affect areas like Matangi Village and Mission Bay. Since the wind is passing from the southwest, villages in that area are experiencing the strongest impact.” **VBTC**



# February – Good catch of Yellow Fin Tuna



Source: Facebook

Warm pool positioned inside Vanuatu Waters. Fishermen reported having good catch of Tuna in February.



# April 2025 – Tropical Cyclone *Tam* (Category 1)



By April 14 to 15, Cyclone Tam passed just south of Aneityum, briefly entering Vanuatu's area of responsibility before quickly moving southeast. It transitioned into a subtropical system by April 16 as it tracked towards New Zealand.

## **Impacts: Minimal Damage**

Rough Seas, coastal erosion, swamped gardens, thunderstorms.

Source: Facebook  
Posted by James Lau – Nobul, North Ambrym.



# Summary

- Rainfall conditions varied across the region, ranging from below normal to above normal. Enhanced weather activity was driven by the presence of troughs, low pressure systems, and tropical cyclones, with record-breaking atmospheric temperatures recorded in New Caledonia.
- Impacts varied across the islands, affecting key sectors such as *transport, infrastructure, agriculture, water, marine, education, health and properties*. Heavy rainfall and tropical systems caused widespread *flooding and landslides*, leading to road closures, damaged homes, and displacement in Fiji. In New Caledonia, multiple tropical depressions brought inter-island travel and flights to a halt, while water quality was compromised on the east coast. Solomon Islands recorded at least one fatal *landslide*, while schools and urban areas experienced *waterlogging*. In Vanuatu, post-earthquake flooding, *storm-force winds*, and *rough seas* damaged gardens, disrupted road access, and *impacted coastal communities*.



PACIFIC REGIONAL  
CLIMATE CENTRE NETWORK



SPREP  
Secretariat of the Pacific Regional  
Environment Programme



Pacific Community  
Communauté  
du Pacifique



COSPPac  
Climate Services for the Pacific



NIWA  
Taihoro Nukurangi





# THANK YOU

