



PACIFIC
METEOROLOGICAL
COUNCIL

2020-21 Southwest Pacific Tropical Cyclone Season Review

Presented by: Ben Noll, NIWA

Support from: BoM, Météo-France,
NOAA, SPC, SPREP, RSMC Nadi

21 April 2021



SPC
Secretariat
of the Pacific
Community



Outline of Presentation

- Review of SW Pacific tropical cyclone activity
- Review of pre-season cyclone outlooks

Friendly reminder: the outlook areas vary by agency

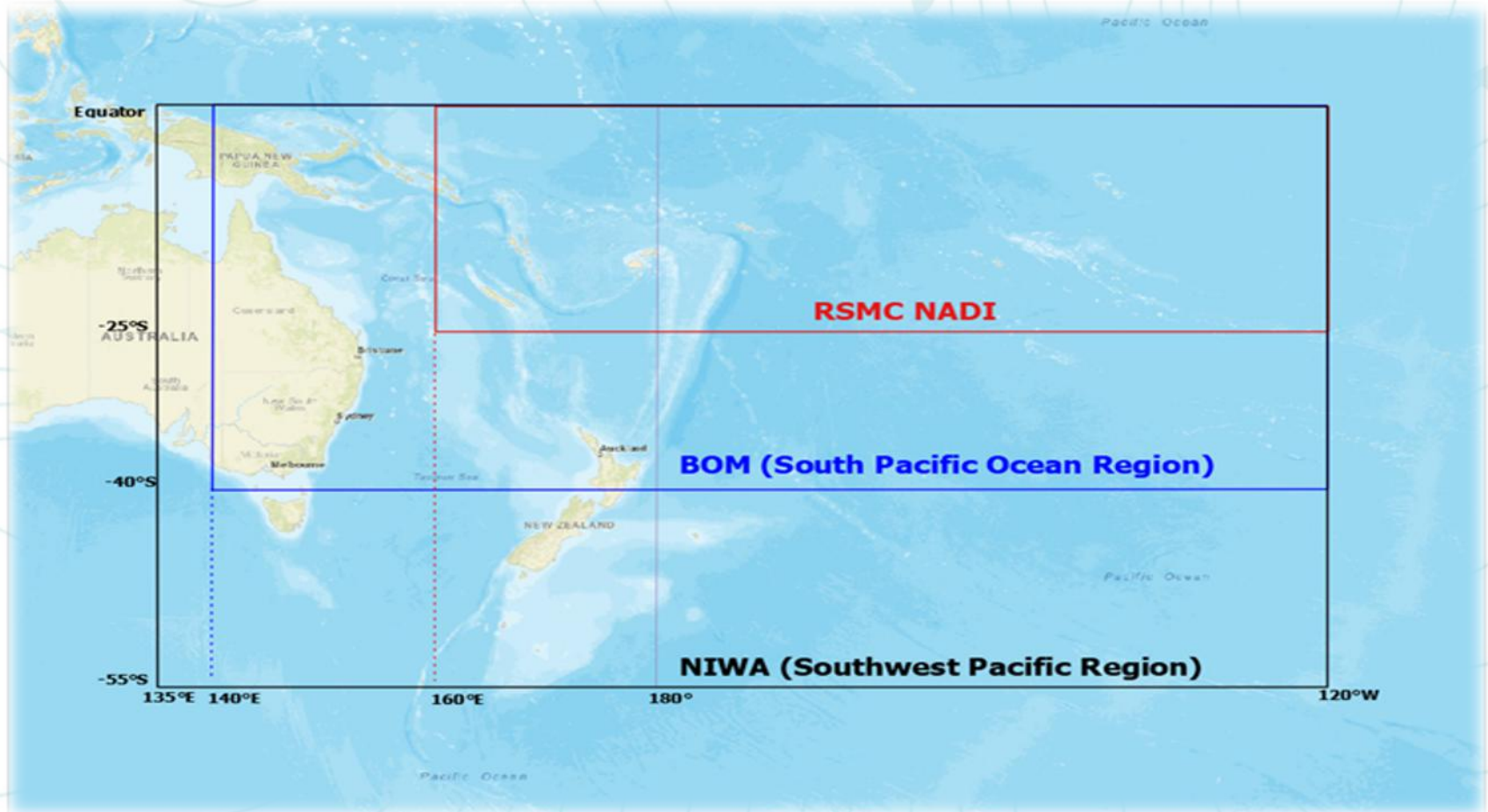
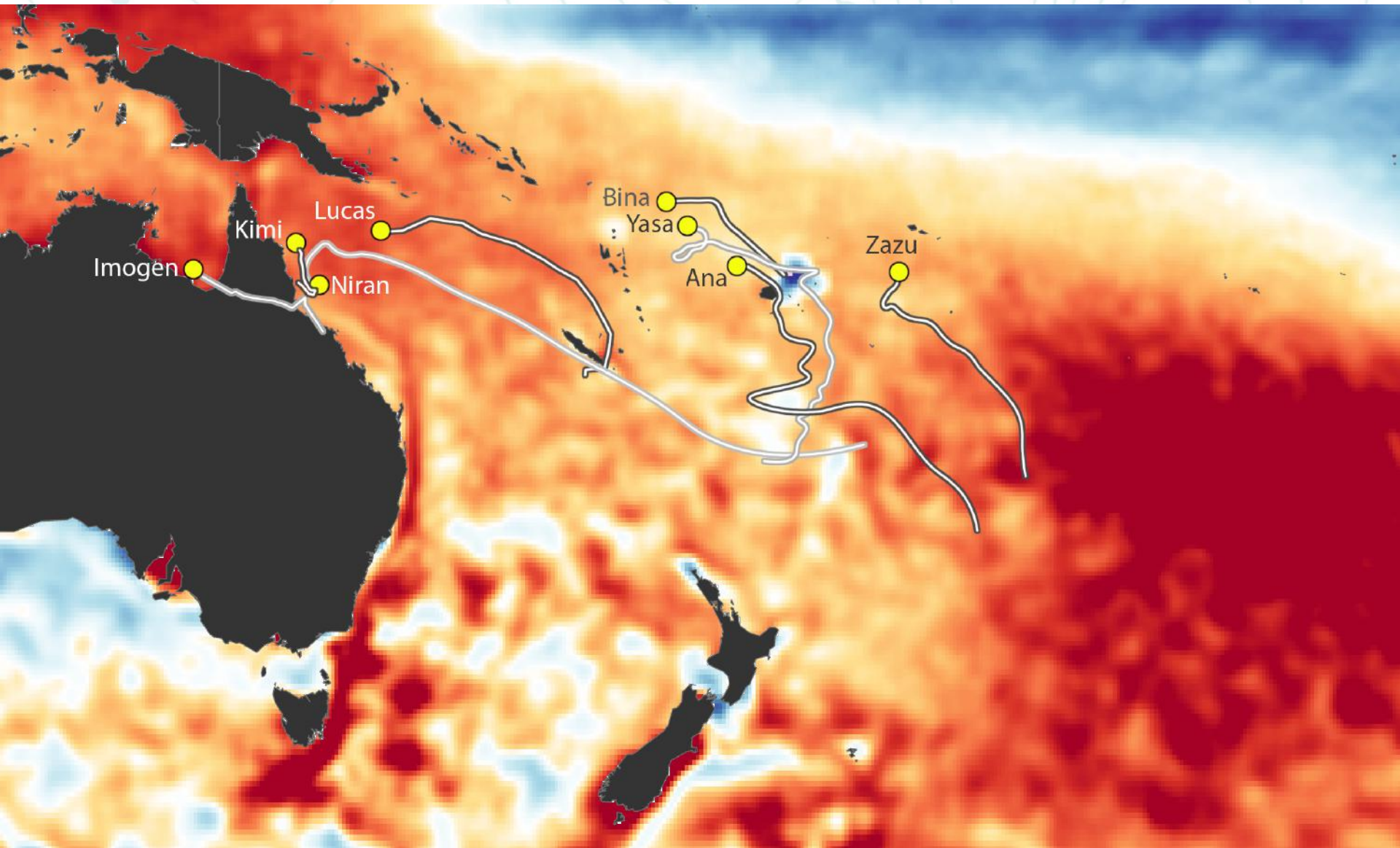


Image credit: Fiji Meteorological Service

2020-21 Southwest Pacific tropical cyclones & SSTs



Recap of 2020/21 season

Agency	Prediction		Observed	
	Total TCs	Severe TCs	Total TCs	Severe TCs
BoM (142.5°E - 120°W)	51% chance of above average (9)		8	3
NIWA (135°E - 120°W)	8-10	3+	8	3
FMS (160°E - 120°W)	4-6	1-3	6	3

- Normal to below normal season predicted and validated

It only takes one...

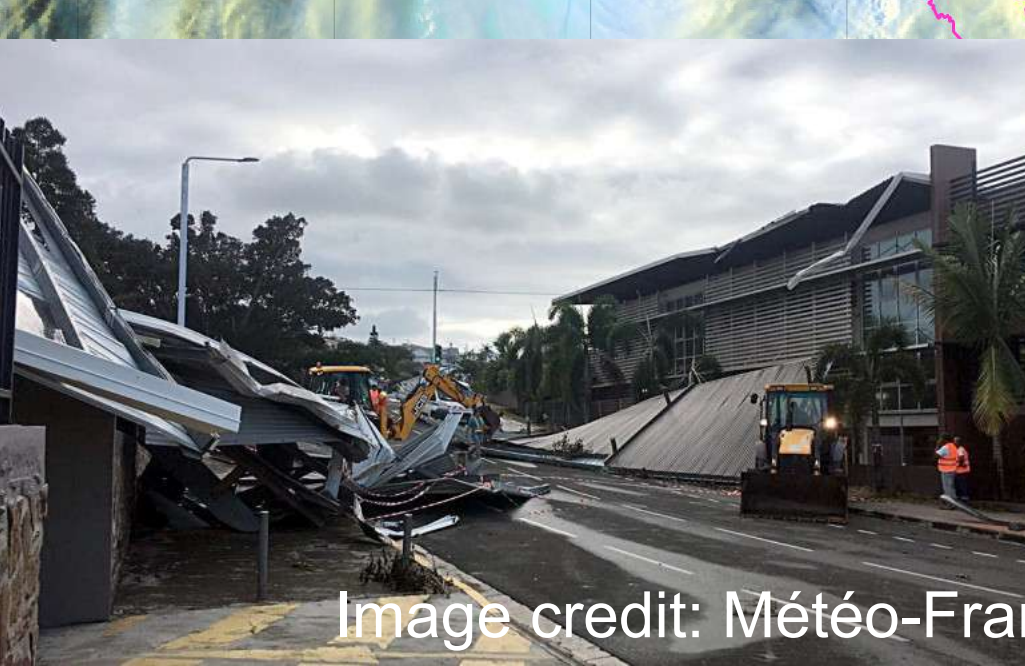
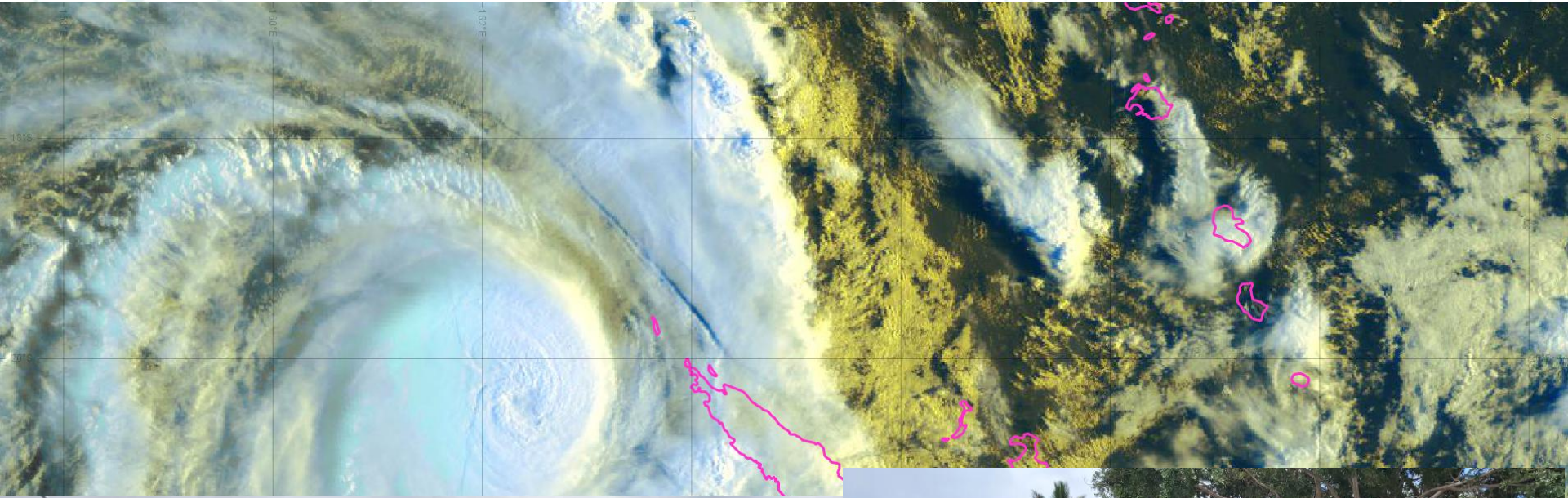
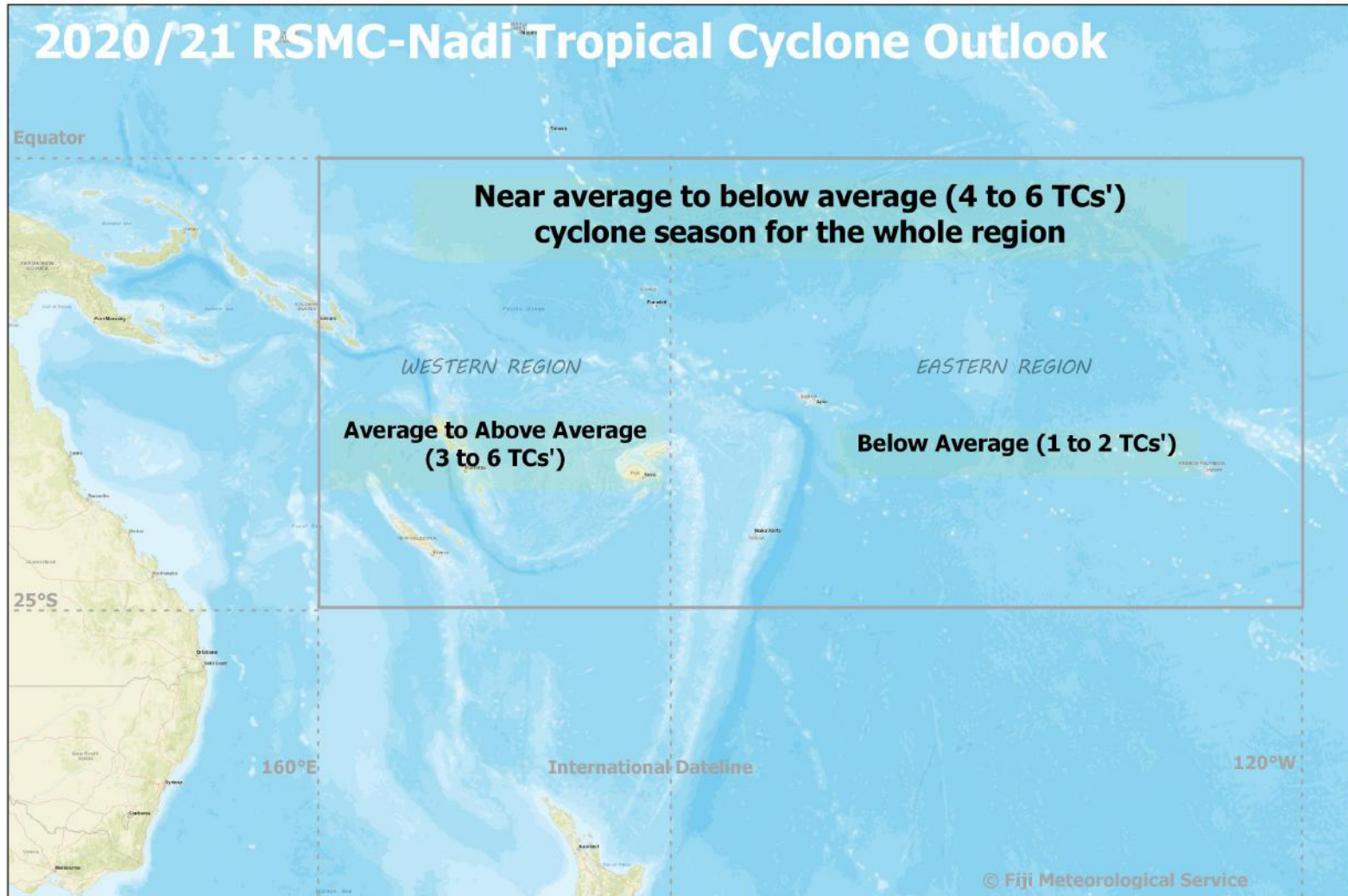


Image credit: Météo-France New Caledonia

2020-21 FMS outlook review



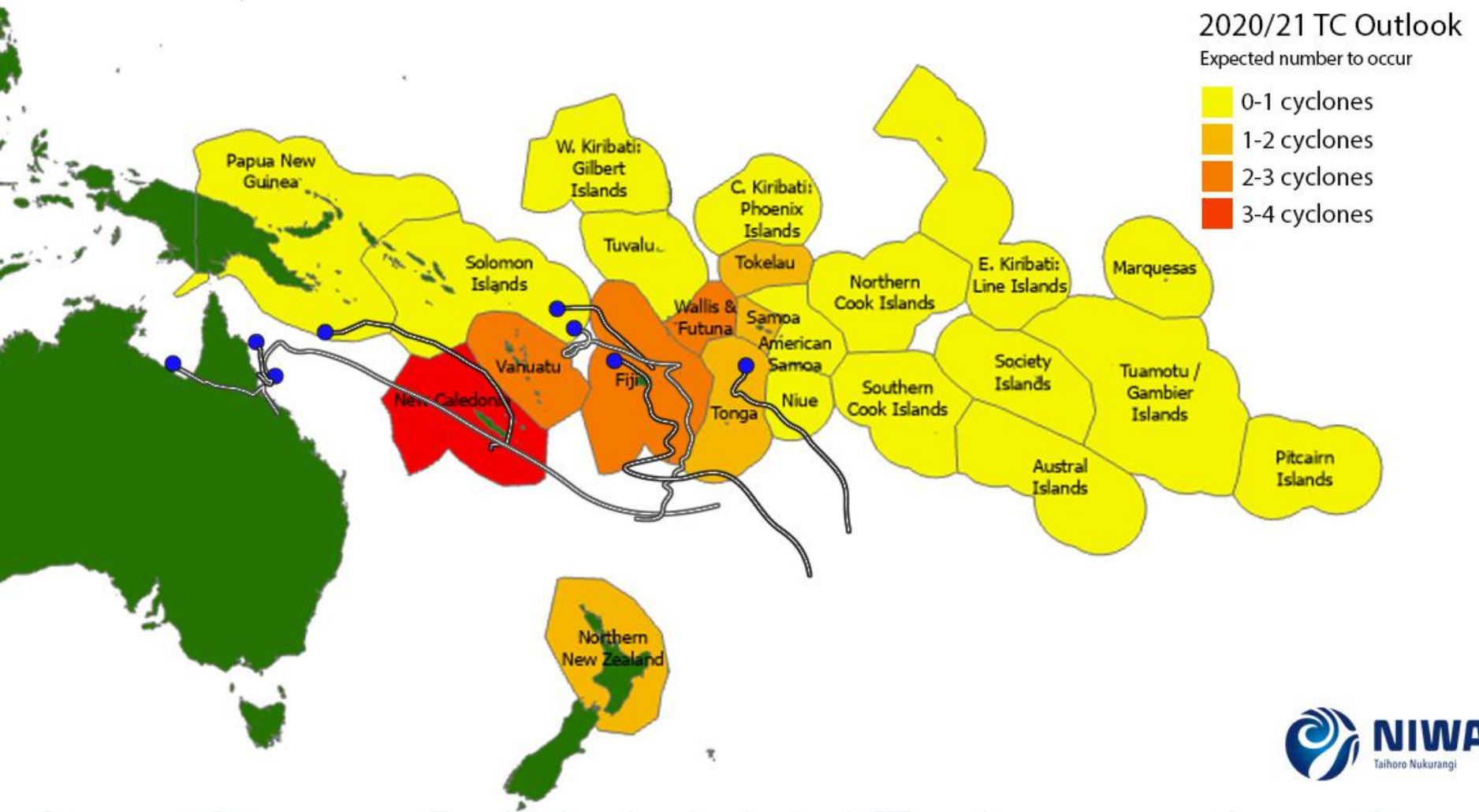
- 3-6 cyclones predicted in the west; 5 occurred
- 1-2 cyclones predicted in the east; 1 occurred

2020-21 BoM outlook review



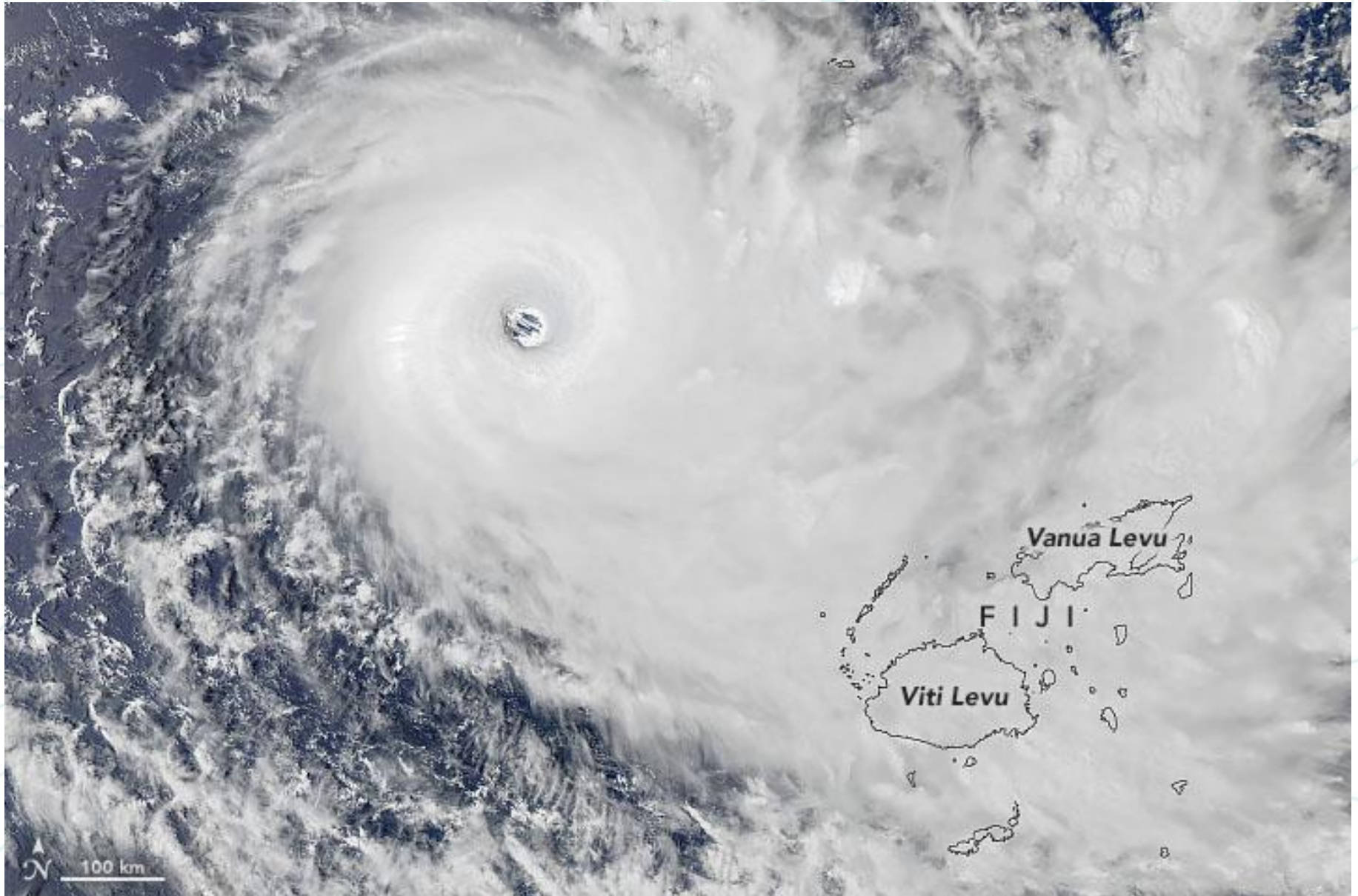
- 60% chance of more than 4 cyclones in the west; 4 occurred
- 45% chance of more than 6 cyclones in the east; 6 occurred

2020-21 NIWA outlook review



- 8 to 10 named storms predicted 135°E to 120°W; 8 occurred

Even in a less active year, strong cyclones strike...



The background features a complex pattern of light blue, wavy lines that resemble topographical contour lines or fluid flow paths. Interspersed among these lines are numerous small, light blue arrows pointing in various directions, creating a sense of movement and flow. The overall aesthetic is clean, modern, and organic.

Thank you!

Questions?